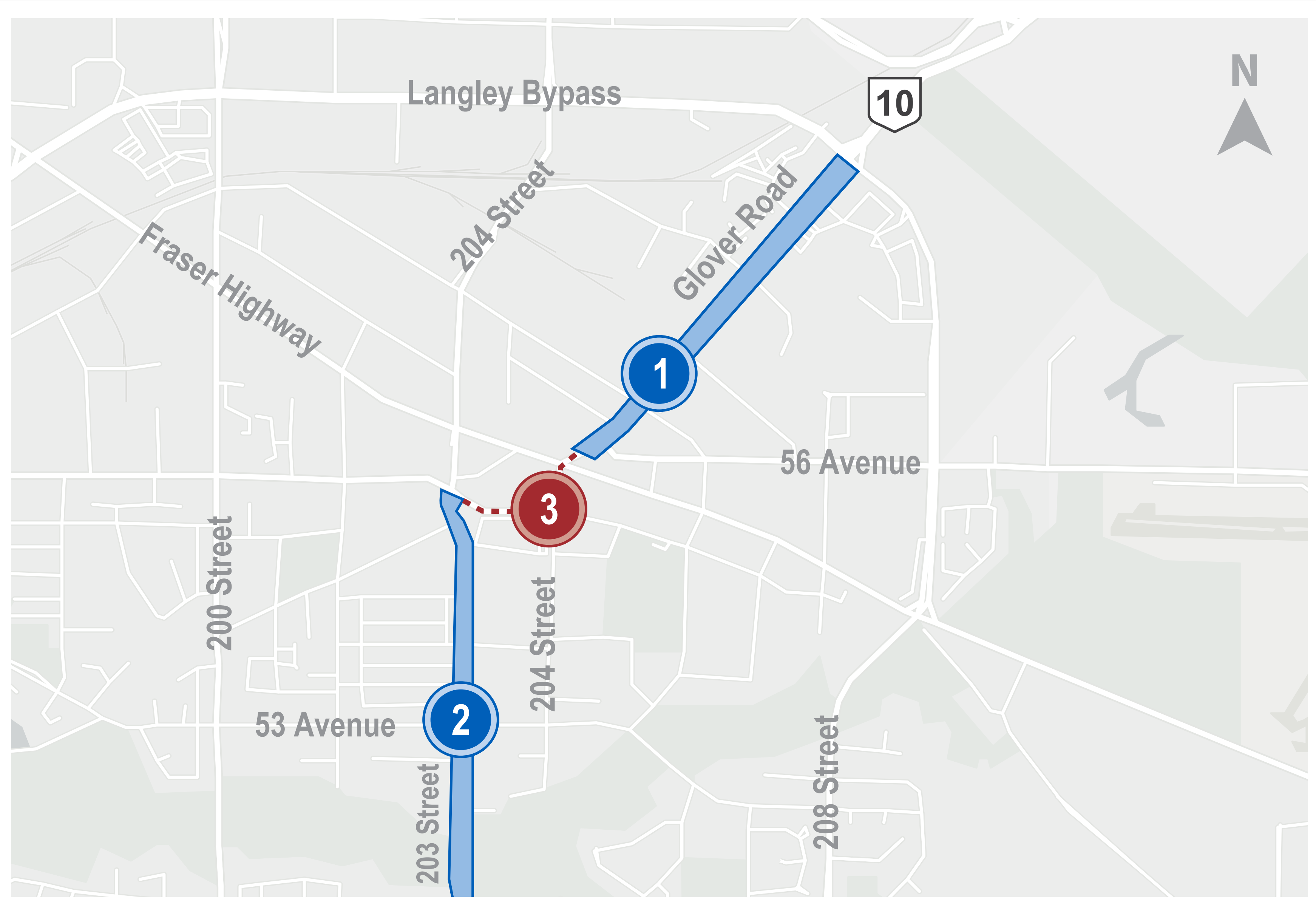


# Downtown Cycling Enhancements



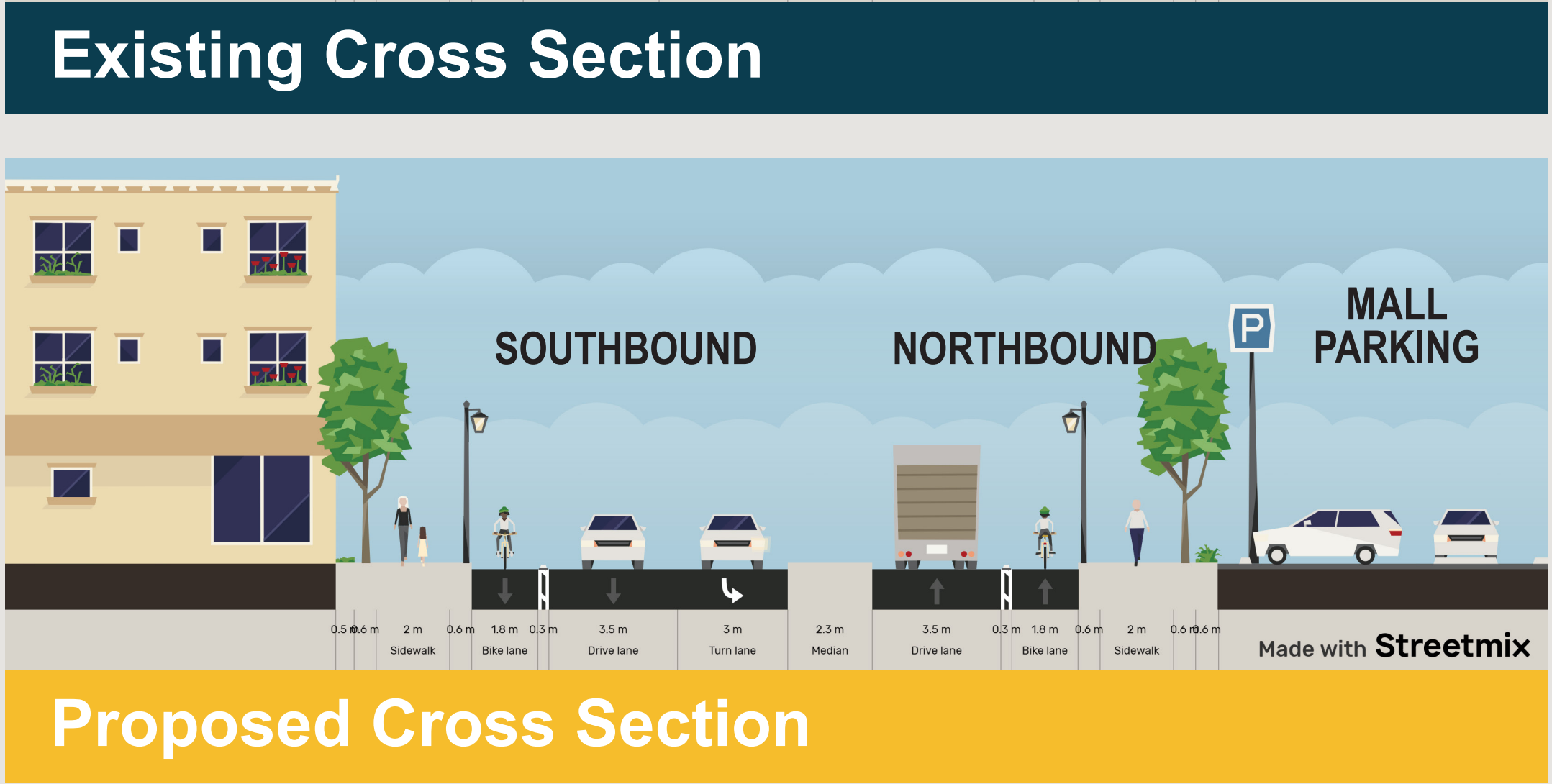
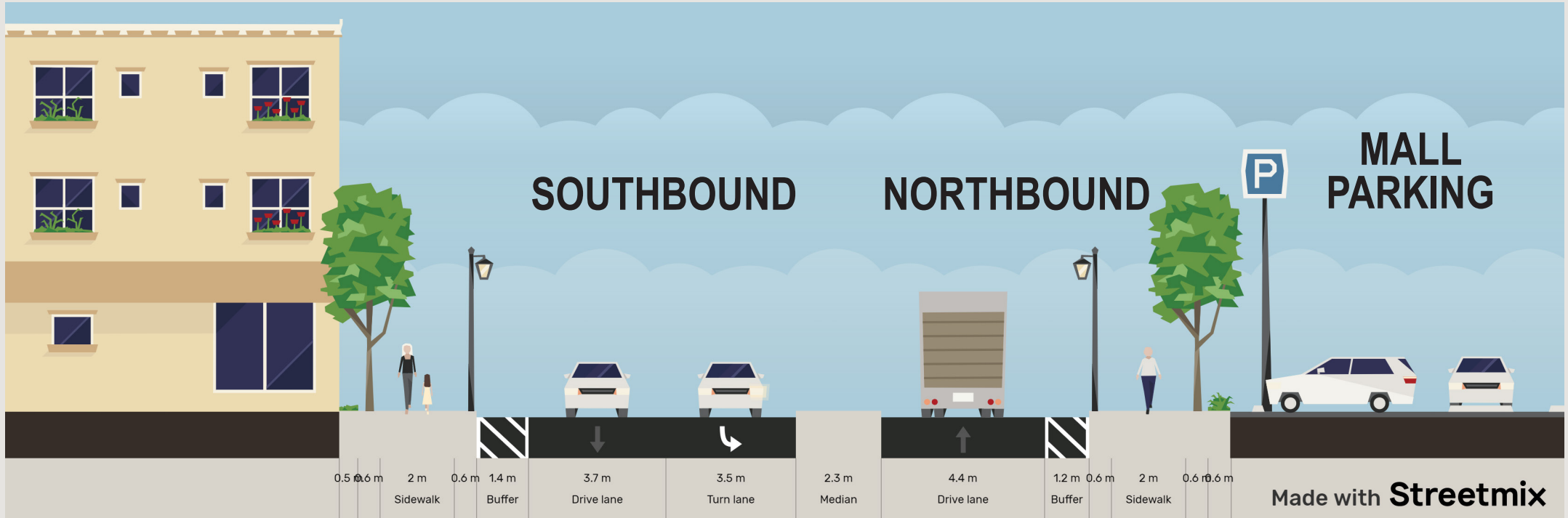
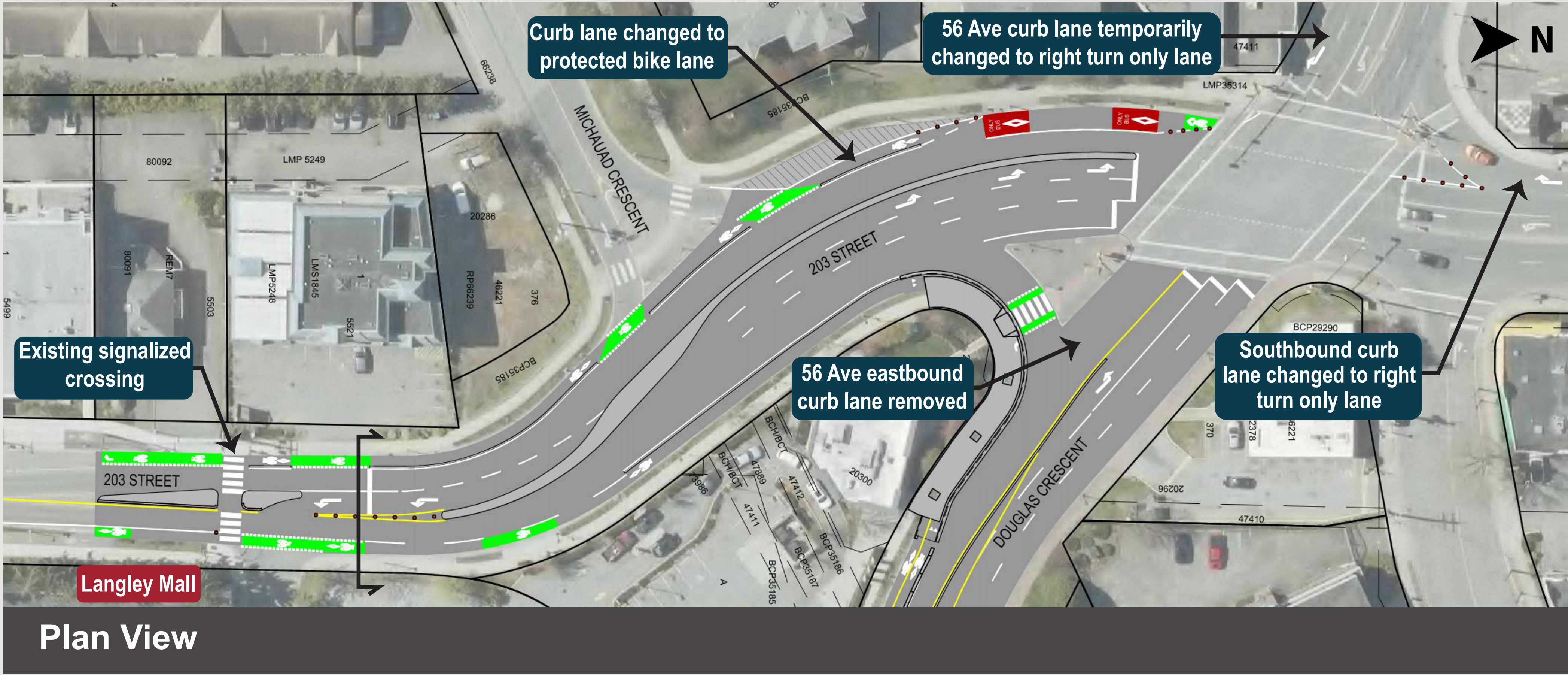
The City is improving bike lane connectivity through downtown Langley with a new protected cycling facility along 203 Street, Douglas Crescent, and 204 Street. The connection will improve comfort and safety for users of all ages and abilities with cost-effective and quick-build materials.

This project is funded by **TRANS LINK**

- 1 Existing Glover Road Protected Bike Lanes
- 2 Existing 203 Street Protected Bike Lanes
- 3 Proposed Connection

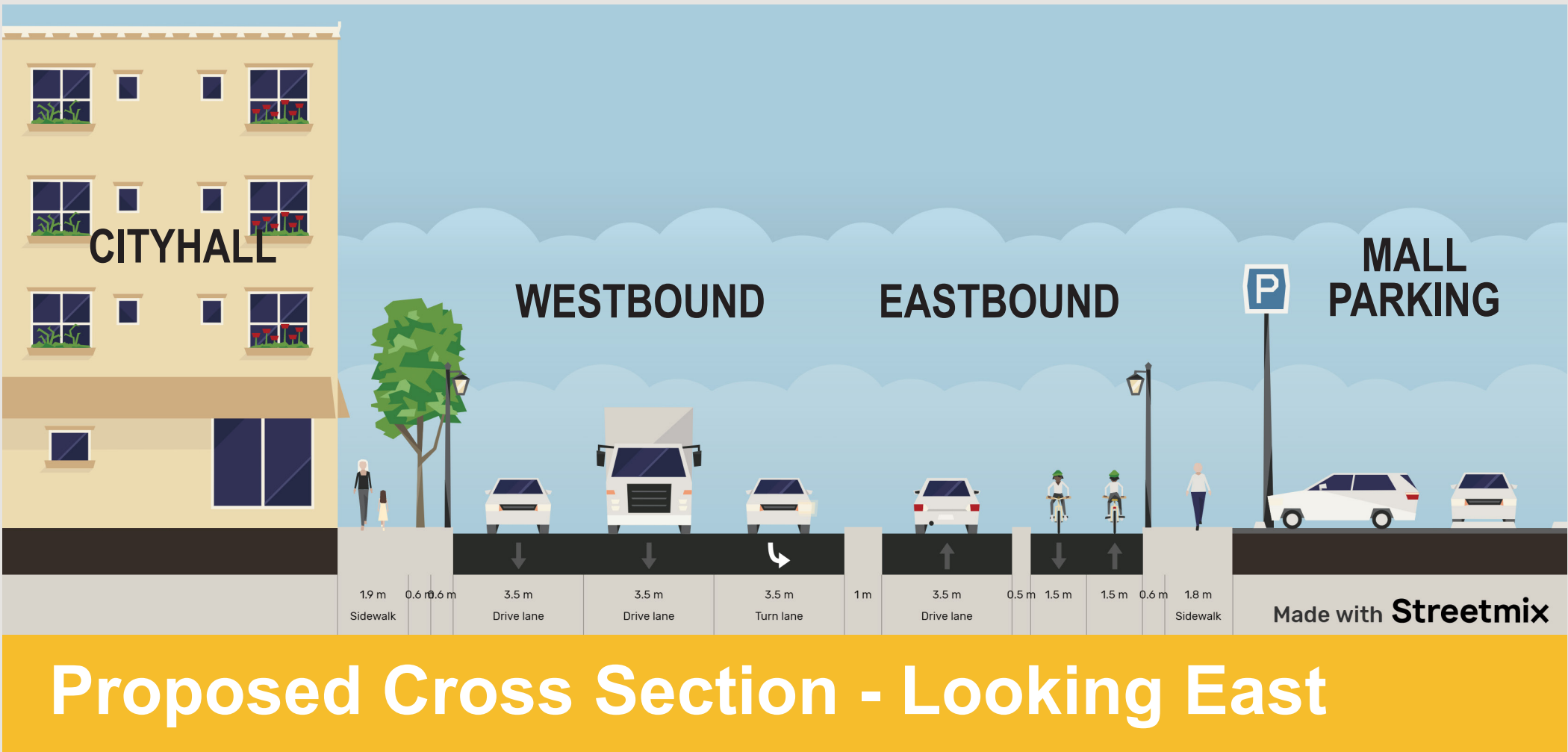
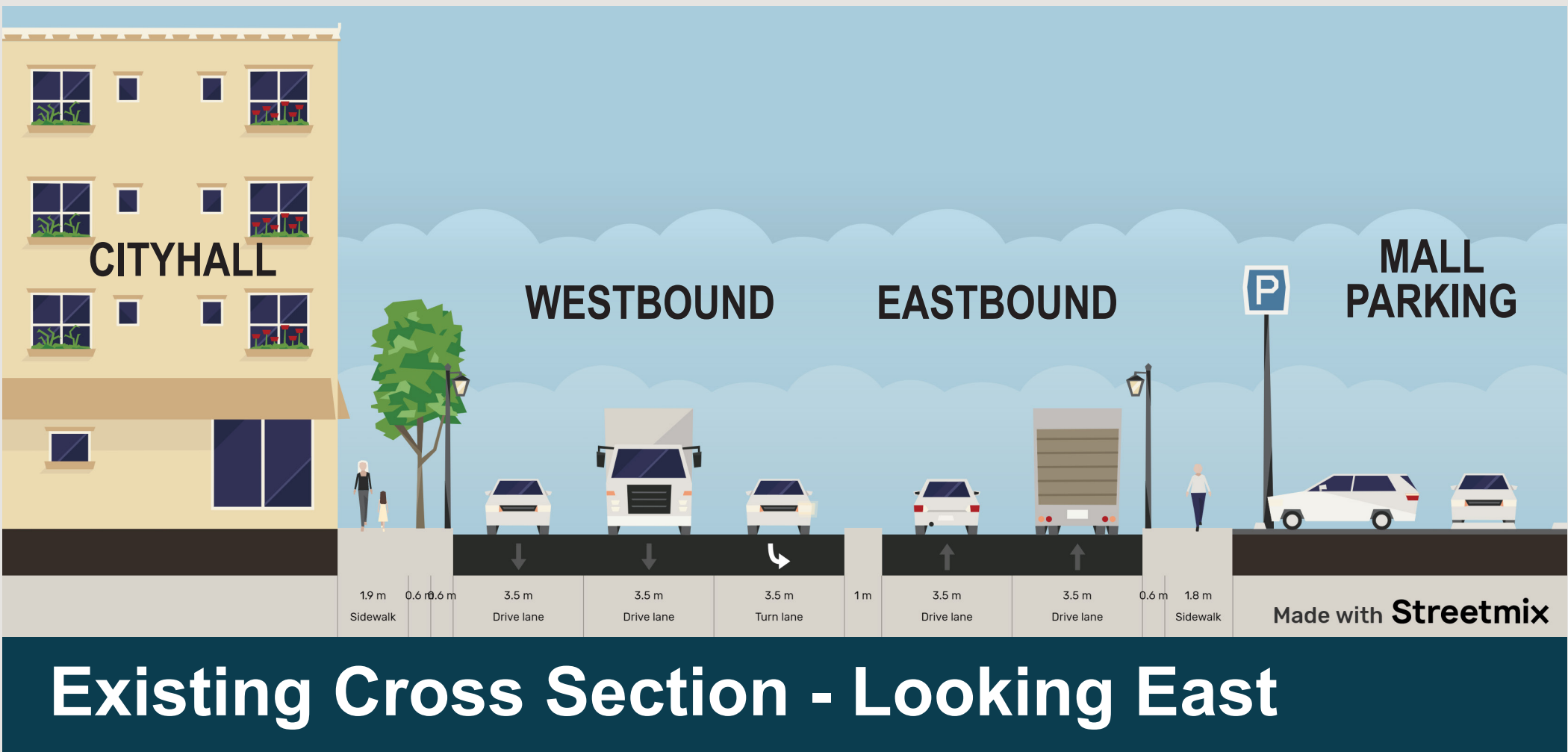
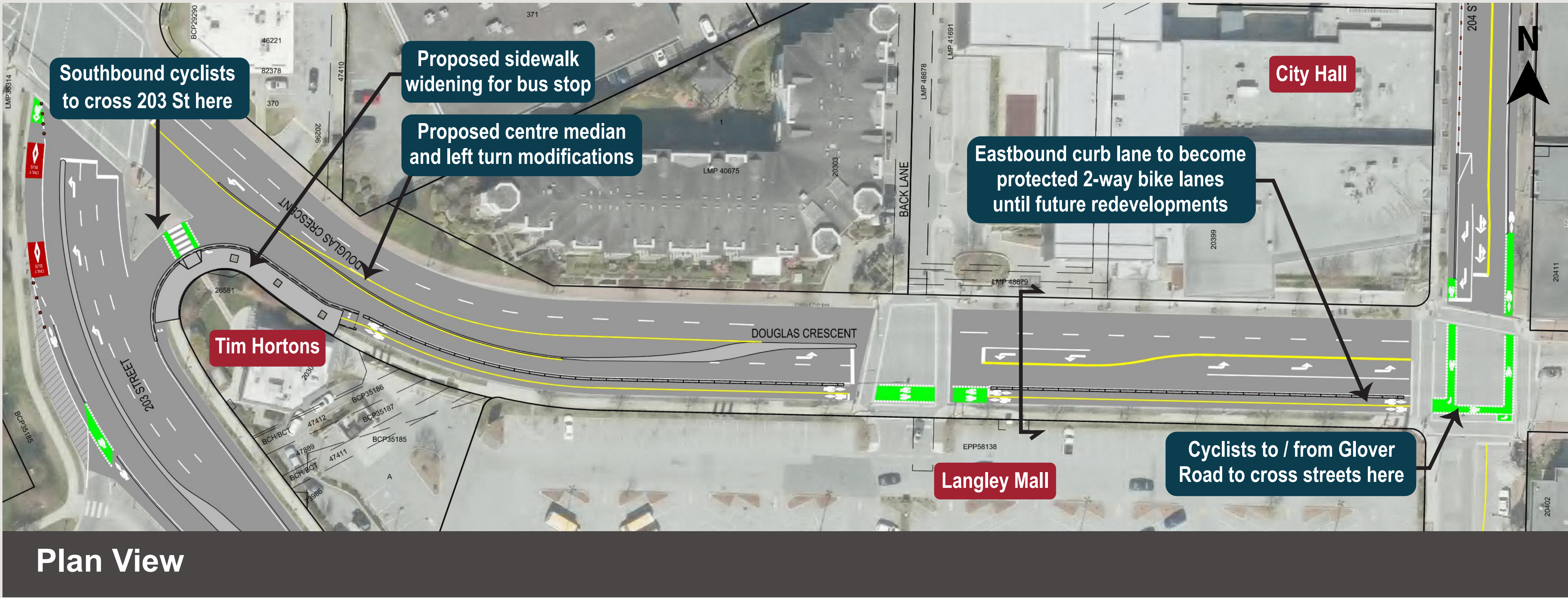


# 203 Street



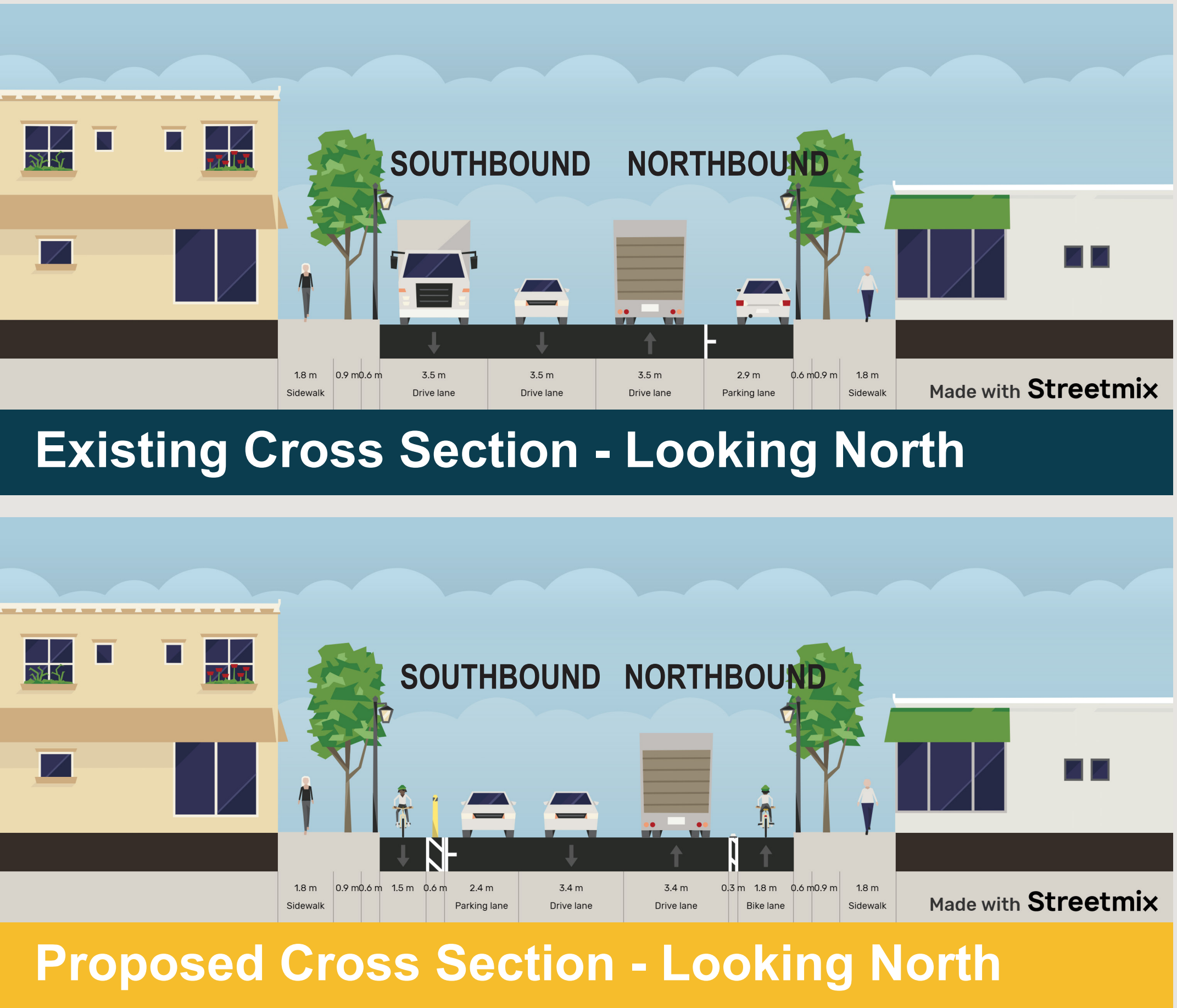
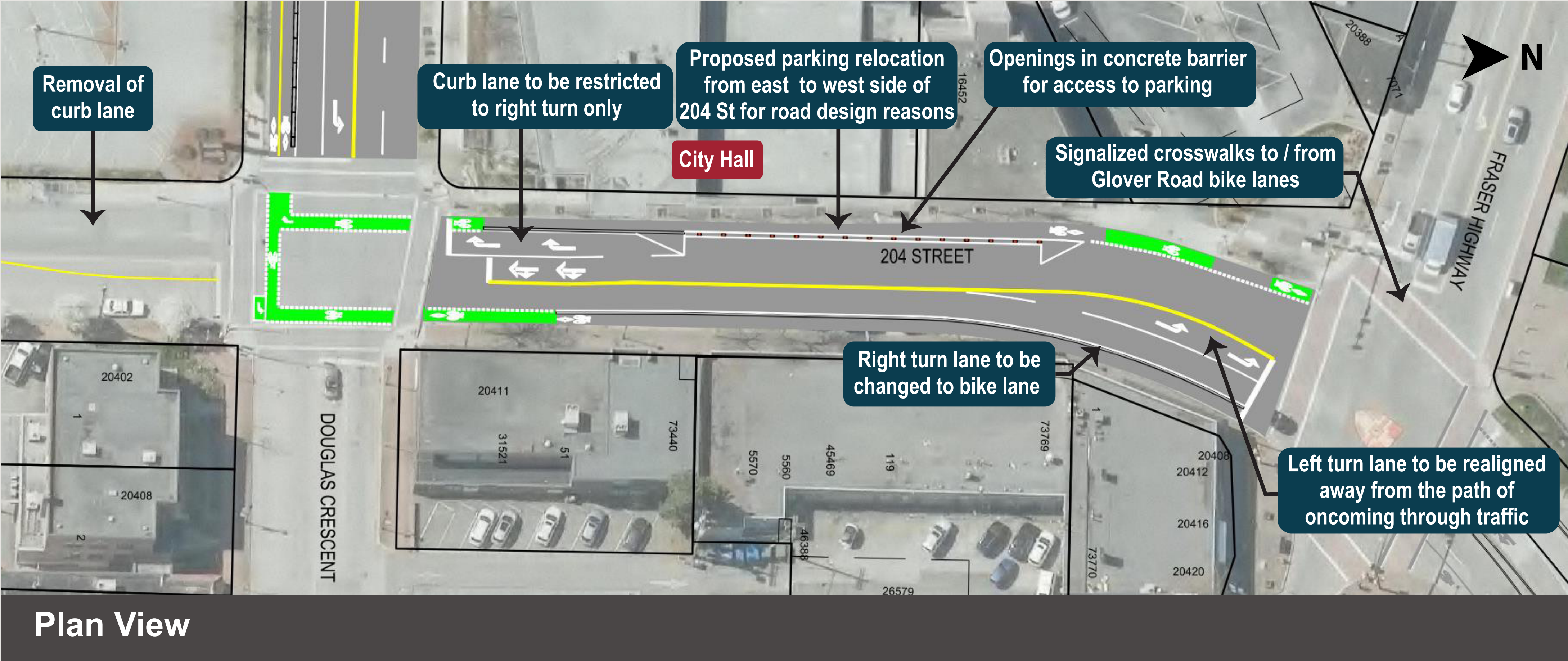


# Douglas Crescent





# 204 Street





# 204 Street Options

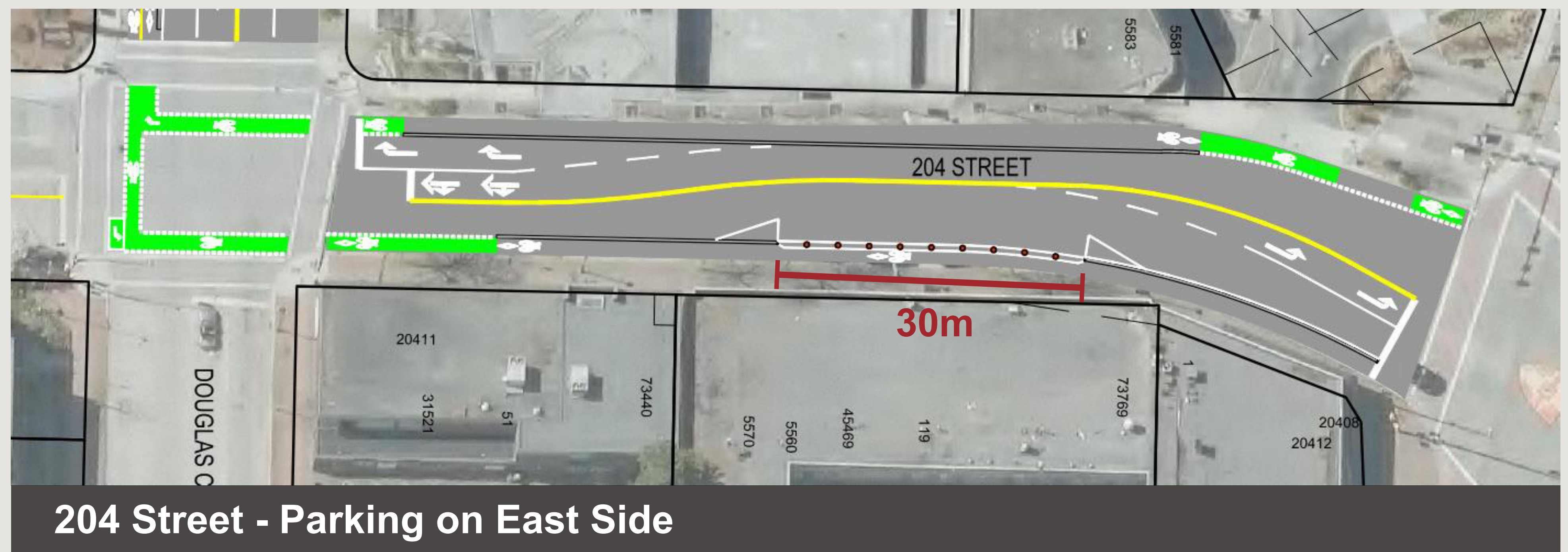
## Option A

- Improves road alignment
- Increases on-street parking supply



## Option B

- Less desirable road alignment
- Reduces on-street parking supply



*Options will be discussed with fronting businesses and selected based on their input.*



# Barrier Types

Recommended for 1-way  
bike lanes



Concrete Curbs (30cm)

Recommended for 2-way  
bike lanes



Taller Concrete Barrier (46cm)

Recommended at intersections  
& 204 St parking



Buffer Space with  
Delineator Posts



# Next Steps

## Timeline



Project information boards will be on display at Langley City Hall at 20399 Douglas Cr until March 31. Staff will be present to answer your questions on Tuesday, March 28 from 6 to 8 pm.

**For additional information please visit the website:**  
[langleycity.ca/city-services/engineering-parks-operations/projects](https://langleycity.ca/city-services/engineering-parks-operations/projects)

**For questions, please contact:**  
Engineering, Parks & Environment Department  
604.514.2800  
[engineering@langleycity.ca](mailto:engineering@langleycity.ca)