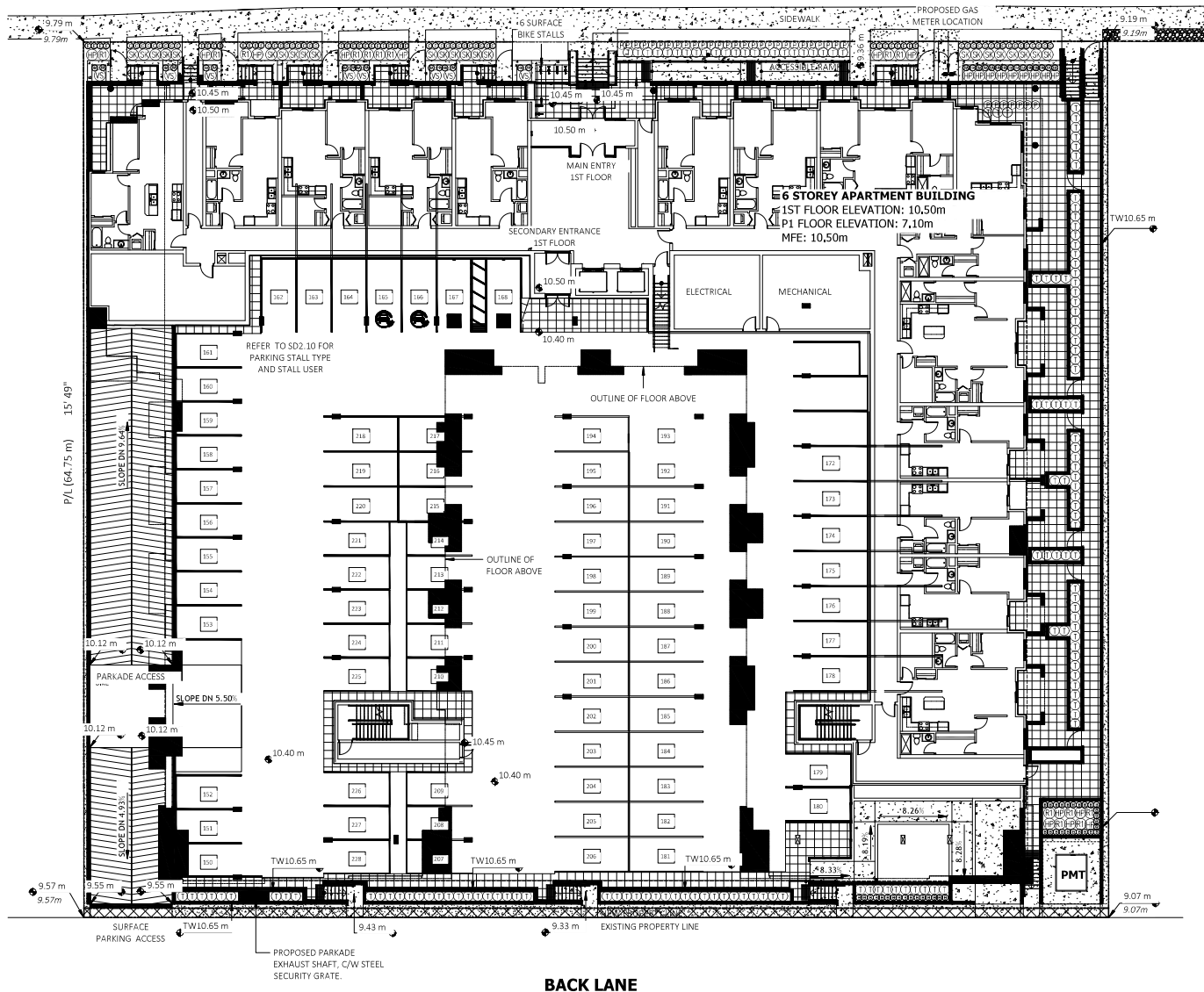


# EASTLEIGH CRESCENT



DATE	REVISIONS	NO.
AUG/22	CITY REQUEST	3
JUL/22	REVISED SITE PLAN	2
MAR/22	REVISED SITE PLAN	1

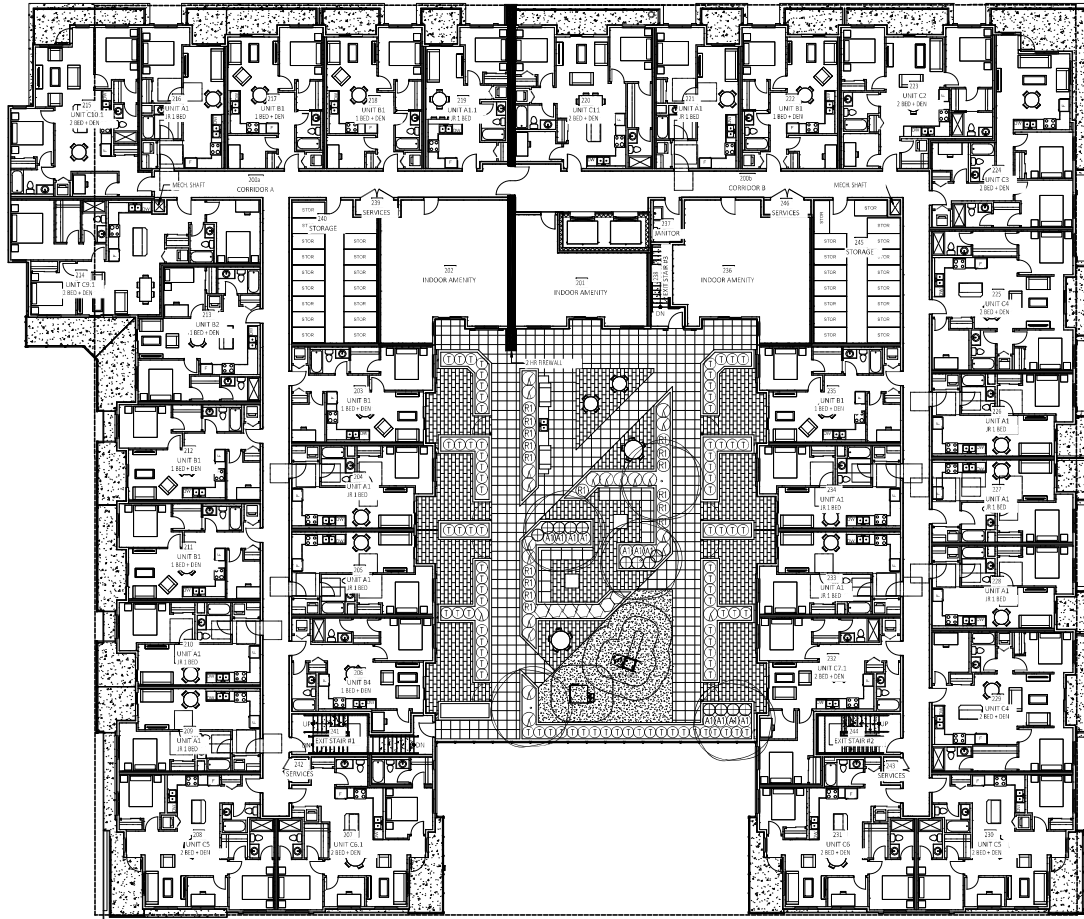
C.KAVOLINAS & ASSOCIATES INC.  
 BCMA CSLA  
 2442 JONDAL COURT  
 ABBOTSFORD, B.C.  
 V3C 3E8  
 PHONE (604) 857-2376

CLIENT  
 WHITEL HONES  
 GROUP OF COMPANIES  
 SUITE #104  
 3550 MI. LEWMAN ROAD  
 ABBOTSFORD, B.C.  
 V3C 3A1

TITLE  
 PLAN VIEW  
 LANDSCAPE PLAN  
 COSSELIN EASTLEIGH  
 APARTMENT BUILDING  
 20444 EASTLEIGH CRESCENT  
 LANGLEY, B.C.

SCALE	1:150	DATE	MAR/22
DRAWN	DWD	CHECKED	DWD
INCH	DWD	DATE	
APPROVED	AS R&T		

PRINTED	JOB NO.	
	DRAWING NO.	L-1



AUG/22	CITY REQUEST	3
JUL/22	REVISED SITE PLAN	2
MAR/22	REVISED SITE PLAN	1
DATE	REVISION	NO.

C. KAVOLINAS & ASSOCIATES INC.  
 BCSIA CSIA  
 2462 JONQUIL COURT  
 ABOTSFORD, B.C.  
 V5G 3T8  
 PHONE (604) 857-2376

CLIENT  
 WHITETAL HOMES  
 GROUP OF COMPANIES  
 SUITE #104  
 3550 MT. LEWIS ROAD  
 ABOTSFORD, B.C.  
 V4E 0A1

TITLE  
 PLAN VIEW  
 LANDSCAPE PLAN  
 GOSSELIN EASTLEIGH  
 APARTMENT BUILDING  
 20644 EASTLEIGH CRESCENT  
 UNGLEY, B.C.

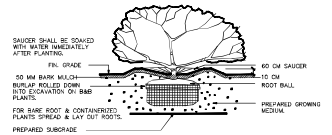
SCALE	1:150	DATE	MAR/22
DRAWN	CH/D	CHECKED	
ENG.	CH/D	APPROVED	AS BUILT

PRINTED  
 JOB No.  
 DRAWING No.  
 L-1A

KEY	BOTANICAL NAME	PLANT LIST		QTY.	SIZE	SPACING	
		COMMON NAME					
○	ACER PALMATUM 'BLOODGOOD'	BLOODGOOD JAP. MAPLE		5	3.00 METERS	AS SHOWN	B. & B.
⊙	BUXUS MACROPHYLLA 'WINTER GEM'	ASIAN BOXWOOD		39	#3 POT	45 CM. O.C.	
⊙	HAKONECLOA MACRA 'AUROCLA'	GOLD VERIEGATED JAPANESE FOREST GRASS		37	#2 POT	45 CM. O.C.	
⊙	EUONYMUS JAPONICA 'EMERALD GAITY'	EUONYMUS SILVER VARIEGATED		28	#2 POT	45 CM. O.C.	
⊙	CAREX OSHIMENSIS 'EVERGOLD'	JAPANESE SEDGE		46	#2 POT	45 CM. O.C.	
⊙	PENNISETUM ALANECROIDES 'LITTLE BUNNY'	LITTLE BUNNY FOUNTAIN GRASS		35	#3 POT	60 CM. O.C.	
⊙	TAXIS x MEDIA HICKSII	HICK'S YEW		215	1.50 METERS	70 CM. O.C.	
⊙	HYDRANGEA PANICULATA 'LIMELIGHT'	LIMELIGHT HYDRANGEA LIMEGREEN-PINK		20	#3 POT	90 CM. O.C.	
⊙	VIBURNUM P.T. 'SUMMER SNOWFLAKE'	SUMMER SNOWFLAKE VIBURNUM		11	#3 POT	90 CM. O.C.	
⊙	SKIMMIA JAPONICA MACROPHYLLA MALE	SKIMMIA		24	#3 POT	90 CM. O.C.	
⊙	MEDIUM RHODODENDRON (VARIOUS)	RHODODENDRON		25	#3 POT	90 CM. O.C.	
⊙	AZALEA JAPONICA 'HINO CRIMSON'	CRIMSON AZALEA		14	#3 POT	90 CM. O.C.	
⊙	AZALEA NORTHERN LIGHTS 'MANDARIN LIGHTS'	NORTHERN LIGHTS AZALEA		11	#3 POT	90 CM. O.C.	
⊙	ABELIA 'EDWARD GOUCHER'	EDWARD GOUCHER ABELIA		7	#3 POT	90 CM. O.C.	
⊙	SYRINGA VULGARIS 'MICHEL BUCHNER'	LILAC		17	#3 POT	90 CM. O.C.	

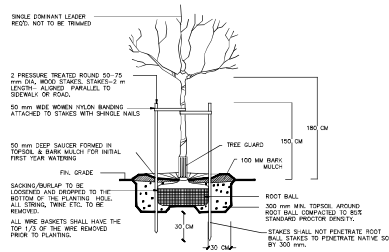
NOTES / GENERAL

- PLANT SIZES IN THIS LIST ARE SPECIFIED ACCORDING TO BC LANDSCAPE STANDARD "LATEST EDITION". CONTAINER SIZES ARE SPECIFIED AS PER "ONIA STANDARDS". BOTH PLANT SIZE AND CONTAINER SIZE ARE THE MINIMUM ACCEPTABLE SIZES. SEARCH AND REVIEW WARE PLANT MATERIAL AVAILABLE FOR OPTIONAL REVIEW BY "LANDSCAPE ARCHITECT" AT SOURCE OF SUPPLY. AREA OF SEARCH TO INCLUDE LOWER MAINLAND AND FRASER VALLEY. "SUBSTITUTIONS" MUST OBTAIN WRITTEN APPROVAL FROM THE "LANDSCAPE ARCHITECT" PRIOR TO MAKING ANY SUBSTITUTIONS TO SPECIFIED MATERIAL. UNAPPROVED SUBSTITUTIONS WILL BE REJECTED. ALLOW A MINIMUM OF FIVE WORKING DAYS PRIOR TO DELIVERY FOR REQUEST TO SUBSTITUTE. SUBSTITUTIONS ARE SUBJECT TO "BC LANDSCAPE STANDARD".
- ALL PLANT MATERIAL MUST BE PROVIDED FROM CERTIFIED "DISEASE FREE" NURSERY. ALL PLANT MATERIAL MUST CONFORM TO THE "LATEST EDITION OF THE "BC LANDSCAPE STANDARD". PROVIDE CERTIFICATION UPON REQUEST. ALL LANDSCAPING AND LANDSCAPE MATERIALS TO CONFORM TO THE LATEST EDITION OF THE BC LANDSCAPE "LANDSCAPE STANDARD".
- MIN. GROWING MEDIUM DEPTHS OVER PREPARED SUBGRADE SHALL BE :  
LAWN AREAS 300 mm  
SHRUB COVER AREAS 450 mm  
SHRUB AREAS 450 mm  
TREE AREAS 300 mm AROUND ROOT BALL
- GROWING MEDIUM SHALL HAVE PHYSICAL AND CHEMICAL PROPERTIES AS DESCRIBED IN THE STANDARDS FOR LEVEL 7 AND LEVEL 3 AREAS, EXCEPT FOR AREAS OVER STRUCTURES WHERE THE MEDIUM SHALL CONFORM TO THE REQUIREMENTS FOR LEVEL 1 APPLICATIONS. PROCESSING AND MIXING OF GROWING MEDIUM COMPONENTS SHALL BE DONE OFF-SITE USING A MECHANIZED SCREENING PROCESS. PROPOSED GROWING MEDIUM SHALL BE TESTED BY A RECOGNIZED LABORATORY. THE CONTRACTOR SHALL GUARANTEE THAT THE SOIL SUBMITTED FOR TESTING IS A REPRESENTATIVE SAMPLE TAKEN FROM THE SOIL THAT WILL BE USED AT THE SITE.
- ON-SITE OR IMPORTED SOILS SHALL SATISFY THE REQUIREMENTS OF THE STANDARDS FOR GROWING MEDIUM. SOILS SHALL BE VIRTUALLY FREE FROM SERICOL, WOOD INCL, WOODY PLANT PARTS, NEEDS OR REPRODUCTIVE PARTS OF WEEDS, PLANT PARASITIC ORGANISMS, TOXIC MATERIALS, STONES OVER 30 MM AND FOREIGN OBJECTS.
- ALL PLANTING BEDS SHALL RECEIVE MIN. 50 MM BARK MULCH.
- PLANT SPECIES AND VARIETIES MAY NOT BE SUBSTITUTED WITHOUT THE APPROVAL OF THE LANDSCAPE ARCHITECT.
- THE CONTRACTOR SHALL GUARANTEE ALL MATERIALS AND WORKMANSHIP FOR A PERIOD OF ONE (1) YEAR FROM THE DATE OF FINAL ACCEPTANCE, UNLESS OTHERWISE SPECIFIED. ALL PLANT MATERIAL NOT SURVIVING OR IN POOR CONDITION DURING THE GUARANTEE PERIOD SHALL BE REPLACED BY THE CONTRACTOR AT NO EXTRA COST TO THE OWNER.
- THE CONTRACTOR SHALL CLEAR AWAY FROM THE SITE ALL RUBBISH AS IT ACCUMULATES, AND SHALL, AT THE COMPLETION OF THE WORK, LEAVE THE WORK AND THE SITE THEREOF IN A CLEAN AND PLEASANT CONDITION, FREE FROM ALL OBSTRUCTIONS.



PLANTING DETAIL — SHRUBS & GRD. COVER PLANTS

SECTION N.T.S.



TREE PLANTING DETAIL

SECTION N.T.S.

AUG/22	CITY REQUEST	3
JUL/22	REVISED SITE PLAN	2
MAR/22	REVISED SITE PLAN	1
DATE	REVISION	NO.

C.KAVOLINIS & ASSOCIATES INC.  
BCSA CSLA  
2462 JOUQUIL COURT  
ARROTSFORD, B.C.  
V5G 3E8  
PHONE (604) 857-2376

CLIENT  
WHITEL, HOMES  
GROUP OF COMPANIES  
SUITE #104  
3550 MT. LEHMAN ROAD  
ARROTSFORD, B.C.  
V6X 0A1

TITLE  
PLAN VIEW  
LANDSCAPE DETAILS  
COSSELINE EASTLEIGH  
APARTMENT BUILDING  
2064 EASTLEIGH CRESCENT  
LANGLEY, B.C.

SCALE	N.T.S.	DATE	MAR/22
DRAWN	CH/D		
CHECKED	CH/D		
APPROVED	RS/BSL		

PRINTED	1/25 IN.
	DRAWING No.
	L-1B