



sheet schedule

SD0.01	COVER PAGE	SD2.20	P1 LEVEL PLAN
SD1.01	CONTEXT PLANS	SD3.01	STREET PERSPECTIVE
SD1.10	PROJECT DATA	SD5.01	SITE SECTION
SD1.11	PROJECT DATA	SD5.02	SITE SECTION
SD1.12	PROJECT DATA		
SD1.13	FSR PLANS		
SD1.14	FSR PLANS		
SD1.15	FSR PLANS		
SD2.01	SITE PLAN		
SD2.10	1ST LEVEL PLAN		
SD2.11	2ND-6TH LEVEL PLAN		
SD2.18	ROOF LEVEL PLAN		
SD2.19	P2 LEVEL PLAN		

Whitetail homes ltd.

T 604-864-0714 | #104 - 3550 Mt. Lehman Rd.
Abbotsford, B.C., V4X 2M9



keystone architecture & planning ltd.

T 604.850.0577 | 300 - 33131 south fraser way
F 1.855.398.4578 | abbotsford, bc v2s 2b1
T 587.391.4768 | 410 - 333 11th avenue sw
calgary, ab t2r 1f9
e-mail: mail@keystonearch.ca
website: keystonearch.ca



WHITETAIL 204 STREET APARTMENTS
5360 - 204 STREET, LANGLEY, BC

COVER PAGE
SCALE: N.T.S.

ISSUED FOR DP
24-05-28 REVISION #
CITY OF LANGLEY FILE #
PROJECT NUMBER: 21172.1



SD0.01



1) 204 st. looking east



2) 204 st. looking north east



3) intersection 53 ave. x 204 st.



4) 204 st. looking south east



5) intersection 54 ave. x 204 st.



no frills



bay 4 transit station

location

THE PROPOSED DEVELOPMENT IS LOCATED IN SOUTH LANGLEY ON 204 STREET, BETWEEN 54A AVE AND 53 AVE. 7 BLOCKS NORTH OF THE SITE LIES LANGLEY CENTRE BAY 4 TRANSIT STATION. 2 BLOCKS NORTH IS AN EXISTING SHOPPING CENTRE WITH A NO FRILLS, AND RESIDENTIAL AREA BETWEEN IT AND THE PROPOSED DEVELOPMENT.



location map / east langley



aerial view looking n/w



WHITETAIL 204 STREET APARTMENTS
5360 - 204 STREET, LANGLEY, BC

CONTEXT PLANS
SCALE: N.T.S.



ISSUED FOR DP
24-05-28 REVISION #
CITY OF LANGLEY FILE #
PROJECT NUMBER: 21172.1



SD1.01

0.2.0 gross floor area summary notes

- GROSS FLOOR AREA IS MEASURED TO OUTSIDE FACE OF SHEATHING
- EXCLUSIONS: NONE

0.2.1 gross floor area summary (level)

LEVEL / AREA TYPE	AREA SF	AREA m ²	AREA %	COMMENTS
P1 LEVEL				
CIRCULATION	2363 SF	219.49 m ²	0.7%	
PARKADE	56516 SF	5250.53 m ²	16.6%	
SERVICE ROOMS/SHAFTS	2130 SF	197.84 m ²	0.6%	
STORAGE	1829 SF	169.88 m ²	0.5%	
	62837 SF	5837.73 m²	18.5%	
P2 LEVEL				
CIRCULATION	2496 SF	231.88 m ²	0.7%	
PARKADE	57509 SF	5350.53 m ²	16.9%	
SERVICE ROOMS/SHAFTS	1157 SF	107.48 m ²	0.3%	
STORAGE	2050 SF	190.46 m ²	0.6%	
	63296 SF	5880.37 m²	18.6%	

0.2.1 gross floor area summary (level)

LEVEL / AREA TYPE	AREA SF	AREA m ²	AREA %	COMMENTS
BUILDING A				
1ST LEVEL				
CIRCULATION	5204 SF	483.46 m ²	1.5%	
INDOOR AMENITY	5738 SF	533.11 m ²	1.7%	
RESIDENTIAL	14439 SF	1341.41 m ²	4.2%	
SERVICE ROOMS/SHAFTS	591 SF	54.88 m ²	0.2%	
	25972 SF	2412.87 m²	7.6%	
2ND LEVEL				
CIRCULATION	3972 SF	368.98 m ²	1.2%	
RESIDENTIAL	21856 SF	2030.51 m ²	6.4%	
SERVICE ROOMS/SHAFTS	63 SF	5.83 m ²	0.0%	
STORAGE	596 SF	55.34 m ²	0.2%	
	26486 SF	2460.66 m²	7.8%	
3RD LEVEL				
CIRCULATION	3962 SF	368.04 m ²	1.2%	
RESIDENTIAL	21856 SF	2030.51 m ²	6.4%	
SERVICE ROOMS/SHAFTS	63 SF	5.83 m ²	0.0%	
STORAGE	596 SF	55.34 m ²	0.2%	
	26476 SF	2459.73 m²	7.8%	
4TH LEVEL				
CIRCULATION	3962 SF	368.04 m ²	1.2%	
RESIDENTIAL	21856 SF	2030.51 m ²	6.4%	
SERVICE ROOMS/SHAFTS	63 SF	5.83 m ²	0.0%	
STORAGE	596 SF	55.34 m ²	0.2%	
	26476 SF	2459.73 m²	7.8%	
5TH LEVEL				
CIRCULATION	3962 SF	368.04 m ²	1.2%	
RESIDENTIAL	21856 SF	2030.51 m ²	6.4%	
SERVICE ROOMS/SHAFTS	63 SF	5.83 m ²	0.0%	
STORAGE	596 SF	55.34 m ²	0.2%	
	26476 SF	2459.73 m²	7.8%	
6TH LEVEL				
CIRCULATION	3962 SF	368.04 m ²	1.2%	
RESIDENTIAL	21856 SF	2030.51 m ²	6.4%	
SERVICE ROOMS/SHAFTS	63 SF	5.83 m ²	0.0%	
STORAGE	596 SF	55.34 m ²	0.2%	
	26476 SF	2459.73 m²	7.8%	

0.2.1 gross floor area summary (level)

LEVEL / AREA TYPE	AREA SF	AREA m ²	AREA %	COMMENTS
BUILDING B				
1ST LEVEL				
CIRCULATION	2112 SF	196.21 m ²	0.6%	
INDOOR AMENITY	1011 SF	93.90 m ²	0.3%	
RESIDENTIAL	3077 SF	281.21 m ²	0.9%	
SERVICE ROOMS/SHAFTS	1532 SF	142.33 m ²	0.5%	
STORAGE	1955 SF	181.60 m ²	0.6%	
	9636 SF	895.25 m²	2.8%	
2ND LEVEL				
CIRCULATION	1197 SF	111.16 m ²	0.4%	
INDOOR AMENITY	553 SF	51.39 m ²	0.2%	
RESIDENTIAL	5585 SF	517.05 m ²	1.6%	
SERVICE ROOMS/SHAFTS	34 SF	3.18 m ²	0.0%	
STORAGE	1773 SF	164.67 m ²	0.5%	
	9122 SF	847.45 m²	2.7%	
3RD LEVEL				
CIRCULATION	1177 SF	109.32 m ²	0.3%	
INDOOR AMENITY	553 SF	51.39 m ²	0.2%	
RESIDENTIAL	5585 SF	518.89 m ²	1.6%	
SERVICE ROOMS/SHAFTS	34 SF	3.18 m ²	0.0%	
STORAGE	1783 SF	165.61 m ²	0.5%	
	9132 SF	848.39 m²	2.7%	
4TH LEVEL				
CIRCULATION	1177 SF	109.32 m ²	0.3%	
INDOOR AMENITY	553 SF	51.39 m ²	0.2%	
RESIDENTIAL	5585 SF	518.89 m ²	1.6%	
SERVICE ROOMS/SHAFTS	34 SF	3.18 m ²	0.0%	
STORAGE	1783 SF	165.61 m ²	0.5%	
	9132 SF	848.39 m²	2.7%	
5TH LEVEL				
CIRCULATION	1177 SF	109.32 m ²	0.3%	
INDOOR AMENITY	553 SF	51.39 m ²	0.2%	
RESIDENTIAL	5585 SF	518.89 m ²	1.6%	
SERVICE ROOMS/SHAFTS	34 SF	3.18 m ²	0.0%	
STORAGE	1783 SF	165.61 m ²	0.5%	
	9132 SF	848.39 m²	2.7%	
6TH LEVEL				
CIRCULATION	1177 SF	109.32 m ²	0.3%	
INDOOR AMENITY	553 SF	51.39 m ²	0.2%	
RESIDENTIAL	5585 SF	518.89 m ²	1.6%	
SERVICE ROOMS/SHAFTS	34 SF	3.18 m ²	0.0%	
STORAGE	1783 SF	165.61 m ²	0.5%	
	9132 SF	848.39 m²	2.7%	
AREA GRAND TOTAL	339782 SF	31566.79 m²	100.0%	

0.2.2 gross floor area outdoor amenity

LEVEL / AREA TYPE	AREA SF	AREA m ²	AREA %	COMMENTS
1ST LEVEL				
OUTDOOR AMENITY	9457 SF	878.59 m ²	100.0%	
AREA GRAND TOTAL	9457 SF	878.59 m²	100.0%	



0.3.0 unit count summary building a

UNIT TYPE	UNIT COUNT	UNIT TYPE %	COMMENTS
BUILDING A			
1 BED	161	70.0%	
1 BED & DEN	5	2.2%	
1 BED (ADAPTABLE)	28	12.2%	
2 BED	36	15.7%	
BUILDING A: 230	100.0%		
TOTAL UNITS: 230	100.0%		

0.3.0 unit count summary building b

UNIT TYPE	UNIT COUNT	UNIT TYPE %	COMMENTS
BUILDING B			
1 BED	26	49.1%	
1 BED & DEN	10	18.9%	
2 BED	17	32.1%	
BUILDING B: 53	100.0%		
TOTAL UNITS: 53	100.0%		

0.4.0 unit floor area summary notes

- ALL UNIT AREAS ARE MEASURED TO THE FOLLOWING: A) EXTERIOR WALL: EXTERIOR SIDE OF SHEATHING. B) PARTY WALL: CENTER OF WALL. C) CORRIDOR/STAIR/ELEVATOR WALL: FULL THICKNESS OF WALL.
- AREAS GIVEN ON DRAWINGS AND IN SCHEDULES ARE NOT TO BE CONSIDERED LEGAL STRATA AREAS. CONFIRM STRATA AREAS BY SURVEY ON SITE.

0.4.1 unit floor area summary

UNIT	UNIT TYPE	COUNT	UNIT AREA SF (LSF)	UNIT AREA m ² (1m ²)	TOTAL UNIT AREA SF	TOTAL UNIT AREA m ²
BUILDING A						
UNIT B1	1 BED	5	534 SF	50 m ²	2,688 SF	247.82 m ²
UNIT B2	1 BED (ADAPTABLE)	5	490 SF	46 m ²	2,452 SF	227.76 m ²
UNIT B3	1 BED	142	502 SF	47 m ²	71,284 SF	6,632.50 m ²
UNIT B2	1 BED	1	503 SF	47 m ²	503 SF	46.76 m ²
UNIT B2.1	1 BED (ADAPTABLE)	12	507 SF	47 m ²	6,081 SF	564.94 m ²
UNIT B2.2	1 BED (ADAPTABLE)	10	497 SF	46 m ²	4,973 SF	461.99 m ²
UNIT B2.2	1 BED (ADAPTABLE)	1	507 SF	47 m ²	507 SF	47.10 m ²
UNIT B2.3	1 BED	2	502 SF	47 m ²	1,004 SF	93.27 m ²
UNIT B3	1 BED	6	537 SF	50 m ²	3,224 SF	299.48 m ²
UNIT B4	1 BED	5	551 SF	51 m ²	2,757 SF	256.11 m ²
UNIT C1	1 BED & DEN	5	592 SF	55 m ²	2,962 SF	275.17 m ²
UNIT D1	2 BED	11	798 SF	74 m ²	8,773 SF	815.06 m ²
UNIT D1	2 BED	1	807 SF	75 m ²	807 SF	75.00 m ²
UNIT D2	2 BED	6	752 SF	70 m ²	4,515 SF	419.43 m ²
UNIT D3	2 BED	12	745 SF	69 m ²	8,939 SF	830.47 m ²
UNIT D3.1	2 BED	6	747 SF	69 m ²	4,479 SF	416.11 m ²
BUILDING A: 230					125,927 SF	11,698.97 m²
BUILDING B						
UNIT B1	1 BED	1	558 SF	52 m ²	558 SF	51.79 m ²
UNIT B2	1 BED	5	501 SF	47 m ²	2,507 SF	232.92 m ²
UNIT B2	1 BED	5	502 SF	47 m ²	2,510 SF	233.39 m ²
UNIT B2.2	1 BED	5	498 SF	46 m ²	2,489 SF	231.28 m ²
UNIT B2.4	1 BED	5	490 SF	46 m ²	2,451 SF	227.71 m ²
UNIT B6	1 BED	5	550 SF	51 m ²	2,748 SF	255.32 m ²
UNIT C2	1 BED & DEN	4	580 SF	54 m ²	2,318 SF	215.37 m ²
UNIT C2	1 BED & DEN	5	640 SF	59 m ²	3,202 SF	297.50 m ²
UNIT C3	1 BED & DEN	1	580 SF	54 m ²	580 SF	53.84 m ²
UNIT D1	2 BED	1	789 SF	73 m ²	789 SF	73.26 m ²
UNIT D1	2 BED	5	796 SF	74 m ²	3,982 SF	369.06 m ²
UNIT D1.1	2 BED	5	787 SF	73 m ²	3,936 SF	365.66 m ²
UNIT D2.2	2 BED	5	774 SF	72 m ²	3,872 SF	359.71 m ²
UNIT D2.2	2 BED	1	779 SF	72 m ²	779 SF	72.33 m ²
BUILDING B: 53					32,720 SF	3,039.83 m²
UNIT TOTALS: 283					158,647 SF	14,738.81 m²



parking stall summary required

UNIT TYPES	BLDG A (MARKET)			BLDG B (RENTAL)			REQUIRED STALLS
	# OF UNITS	RATIO	TOTAL	# OF UNITS	RATIO	TOTAL	
STUDIO	6 UNITS	*1.00	6 STALLS	0 UNITS	*1.00	0 STALLS	6 STALLS
1 BED (& DEN)	192 UNITS	*1.00	192 STALLS	35 UNITS	*1.00	36 STALLS	291 STALLS
2 BED	36 UNITS	*1.25	45 STALLS	17 UNITS	*1.25	21.3 STALLS	68 STALLS
TOTAL MARKET			243 STALLS			58 STALLS	
VISITOR	234 UNITS	*0.15	35.1 STALLS	53 UNITS	*0.15	7.9 STALLS	
TOTAL VISITOR			35 STALLS			8 STALLS	43 STALLS
TOTAL STALLS			278 STALLS			66 STALLS	344 STALLS

0.5.1 vehicle parking stall summary proposed

PARKING STALL USER/TYPE	PARKING STALL COUNT	% BY STALL USER	% OF OVERALL	LEVEL	COMMENTS
MARKET RESIDENT					
ACCESSIBLE	9	4%	2.6%	P2 LEVEL	
ACCESSIBLE	7	3%	2.0%	P1 LEVEL	
PARALLEL	14	6%	4.0%	P1 LEVEL	
SMALL CAR	55	23%	15.8%	P2 LEVEL	
SMALL CAR	9	4%	2.6%	P1 LEVEL	
SMALL EV	2	1%	0.6%	P1 LEVEL	
STANDARD	102	42%	29.2%	P2 LEVEL	
STANDARD	25	10%	7.2%	P1 LEVEL	
STANDARD EV	21	9%	6.0%	P1 LEVEL	
MARKET RESIDENT: 244		100%	69.3%		
MARKET VISITOR					
ACCESSIBLE	2	5%	0.6%	P1 LEVEL	
SMALL CAR	14	37%	4.0%	P1 LEVEL	
STANDARD	22	58%	6.3%	P1 LEVEL	
MARKET VISITOR: 38		100%	10.3%		
RENTAL RESIDENT					
ACCESSIBLE	2	2%	0.6%		
ACCESSIBLE	1	2%	0.3%	P1 LEVEL	
SMALL CAR	19	32%	5.4%	P1 LEVEL	
SMALL EV	4	7%	1.1%	P1 LEVEL	
STANDARD	33	56%	9.5%	P1 LEVEL	
RENTAL RESIDENT: 59		100%	16.9%		
RENTAL VISITOR					
ACCESSIBLE	1	13%	0.3%	1ST LEVEL	
SMALL CAR	3	38%	0.9%	1ST LEVEL	
STANDARD	4	50%	1.1%	1ST LEVEL	
RENTAL VISITOR: 8		100%	2.3%		
TOTAL PARKING STALLS: 349			100.0%		

0.5.3 storage stall summary

PARKING STALL USER/TYPE	PARKING STALL COUNT	PARKING STALL %	LEVEL	COMMENTS
MARKET RESIDENT				
STORAGE LOCKER	43	14.8%	1ST LEVEL	
STORAGE LOCKER	44	15.2%	2ND LEVEL	
STORAGE LOCKER	37	12.8%	3RD LEVEL	
STORAGE LOCKER	37	12.8%	4TH LEVEL	
STORAGE LOCKER	37	12.8%	5TH LEVEL	
STORAGE LOCKER	37	12.8%	6TH LEVEL	
MARKET RESIDENT: 235		81.0%		
RENTAL RESIDENT				
STORAGE LOCKER	20	6.9%	1ST LEVEL	
STORAGE LOCKER	7	2.4%	2ND LEVEL	
STORAGE LOCKER	7	2.4%	3RD LEVEL	
STORAGE LOCKER	7	2.4%	4TH LEVEL	
STORAGE LOCKER	7	2.4%	5TH LEVEL	
STORAGE LOCKER	7	2.4%	6TH LEVEL	
RENTAL RESIDENT: 55		19.0%		
TOTAL STORAGE STALLS: 290		100.0%		

NOTE: TOTAL REQUIRED STORAGE IS 1 PER UNIT

0.5.2 bike parking stall summary

PARKING STALL USER/TYPE	PARKING STALL COUNT	PARKING STALL %	LEVEL	COMMENTS
MARKET RESIDENT				
STANDARD BIKE	58	36.9%	P2 LEVEL	
VERTICAL BIKE	1	0.6%	P2 LEVEL	
STANDARD BIKE	58	36.9%	P1 LEVEL	
VERTICAL BIKE	1	0.6%	P1 LEVEL	
MARKET RESIDENT: 118		75.2%		
RENTAL RESIDENT				
STANDARD BIKE	15	9.6%	P1 LEVEL	
VERTICAL BIKE	12	7.6%	P1 LEVEL	
RENTAL RESIDENT: 27		17.2%		
MARKET VISITOR				
BIKE (RACK)	6	3.8%	1ST LEVEL	
MARKET VISITOR: 6		3.8%		
RENTAL VISITOR				
BIKE (RACK)	6	3.8%	1ST LEVEL	
RENTAL VISITOR: 6		3.8%		
TOTAL PARKING STALLS: 157		100.0%		



0.6.0 fsr floor area summary notes

- FSR IS MEASURED TO OUTSIDE FACE OF SHEATHING
- EXCLUSIONS: STORAGE ROOMS (FOR PROPERTIES IN THE "FLOOD CONSTRUCTION LEVEL")

0.6.1 fsr floor area summary

LEVEL / AREA TYPE	AREA SF	AREA m ²	AREA %	COMMENTS
BUILDING A				
SERVICE ROOMS/SHAFTS				
1ST LEVEL	591 SF	54.88 m ²	0.3%	
2ND LEVEL	63 SF	5.83 m ²	0.0%	
3RD LEVEL	63 SF	5.83 m ²	0.0%	
4TH LEVEL	63 SF	5.83 m ²	0.0%	
5TH LEVEL	63 SF	5.83 m ²	0.0%	
6TH LEVEL	63 SF	5.83 m ²	0.0%	
	904 SF	84.01 m²	0.4%	
RESIDENTIAL				
1ST LEVEL	16693 SF	1550.80 m ²	7.8%	
2ND LEVEL	21858 SF	2030.72 m ²	10.2%	
3RD LEVEL	21858 SF	2030.72 m ²	10.2%	
4TH LEVEL	21858 SF	2030.72 m ²	10.2%	
5TH LEVEL	21858 SF	2030.72 m ²	10.2%	
6TH LEVEL	21858 SF	2030.72 m ²	10.2%	
	125985 SF	11704.40 m²	59.0%	
INDOOR AMENITY				
1ST LEVEL	4495 SF	417.62 m ²	2.1%	
	4495 SF	417.62 m²	2.1%	
CIRCULATION				
1ST LEVEL	5204 SF	483.46 m ²	2.4%	
2ND LEVEL	3969 SF	368.77 m ²	1.9%	
3RD LEVEL	3969 SF	368.77 m ²	1.9%	
4TH LEVEL	3969 SF	368.77 m ²	1.9%	
5TH LEVEL	3969 SF	368.77 m ²	1.9%	
6TH LEVEL	3969 SF	368.77 m ²	1.9%	
	25051 SF	2327.31 m²	11.7%	
AREA EXCLUSION				
1ST LEVEL	1955 SF	181.60 m ²	0.9%	
2ND LEVEL	1659 SF	154.15 m ²	0.8%	STORAGE
3RD LEVEL	1659 SF	154.15 m ²	0.8%	STORAGE
4TH LEVEL	1659 SF	154.15 m ²	0.8%	STORAGE
5TH LEVEL	1659 SF	154.15 m ²	0.8%	STORAGE
6TH LEVEL	1659 SF	154.15 m ²	0.8%	STORAGE
	10251 SF	952.33 m²	4.8%	
	166686 SF	15485.68 m²	78.0%	
BUILDING B				
SERVICE ROOMS/SHAFTS				
1ST LEVEL	1532 SF	142.33 m ²	0.7%	
2ND LEVEL	35 SF	3.29 m ²	0.0%	
3RD LEVEL	35 SF	3.29 m ²	0.0%	
4TH LEVEL	35 SF	3.29 m ²	0.0%	
5TH LEVEL	35 SF	3.29 m ²	0.0%	
6TH LEVEL	35 SF	3.29 m ²	0.0%	
	1709 SF	158.77 m²	0.8%	
RESIDENTIAL				
1ST LEVEL	2027 SF	181.21 m ²	1.4%	
2ND LEVEL	6119 SF	568.49 m ²	2.9%	
3RD LEVEL	6128 SF	569.34 m ²	2.9%	
4TH LEVEL	6128 SF	569.34 m ²	2.9%	
5TH LEVEL	6129 SF	569.39 m ²	2.9%	
6TH LEVEL	6129 SF	569.39 m ²	2.9%	
	33661 SF	3127.16 m²	15.8%	
CIRCULATION				
1ST LEVEL	2112 SF	196.21 m ²	1.0%	
2ND LEVEL	1197 SF	111.16 m ²	0.6%	
3RD LEVEL	1187 SF	110.25 m ²	0.6%	
4TH LEVEL	1187 SF	110.25 m ²	0.6%	
5TH LEVEL	1187 SF	110.25 m ²	0.6%	

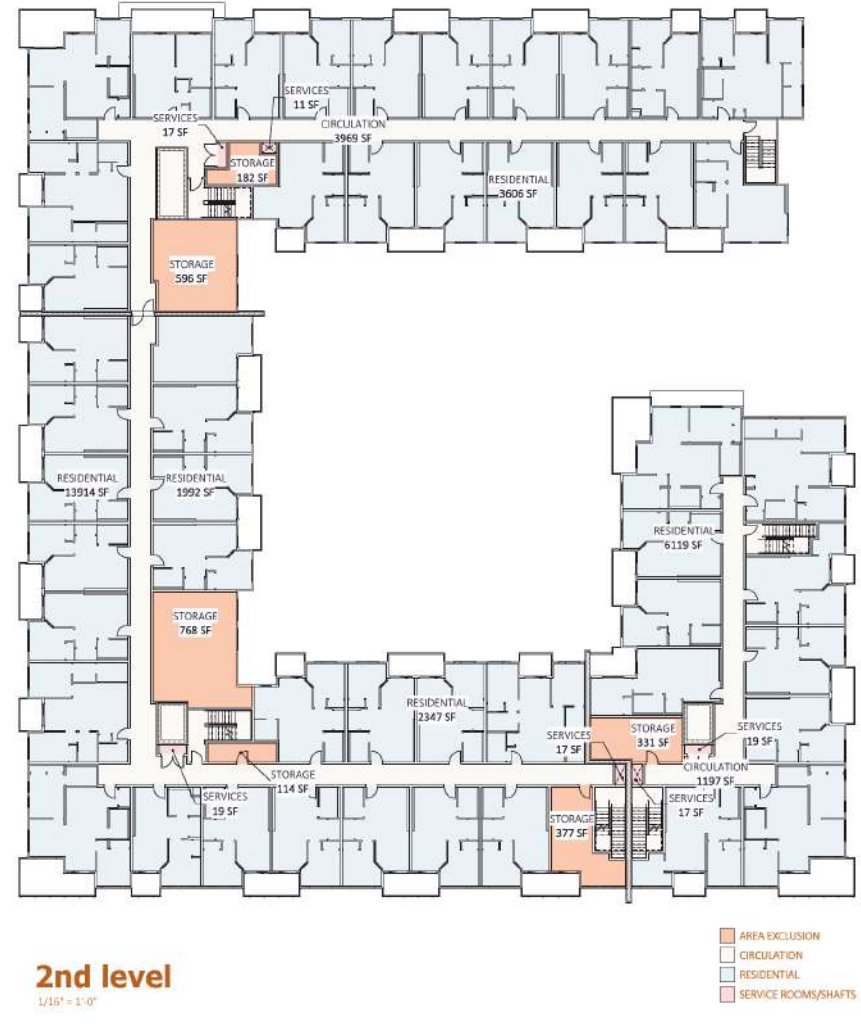
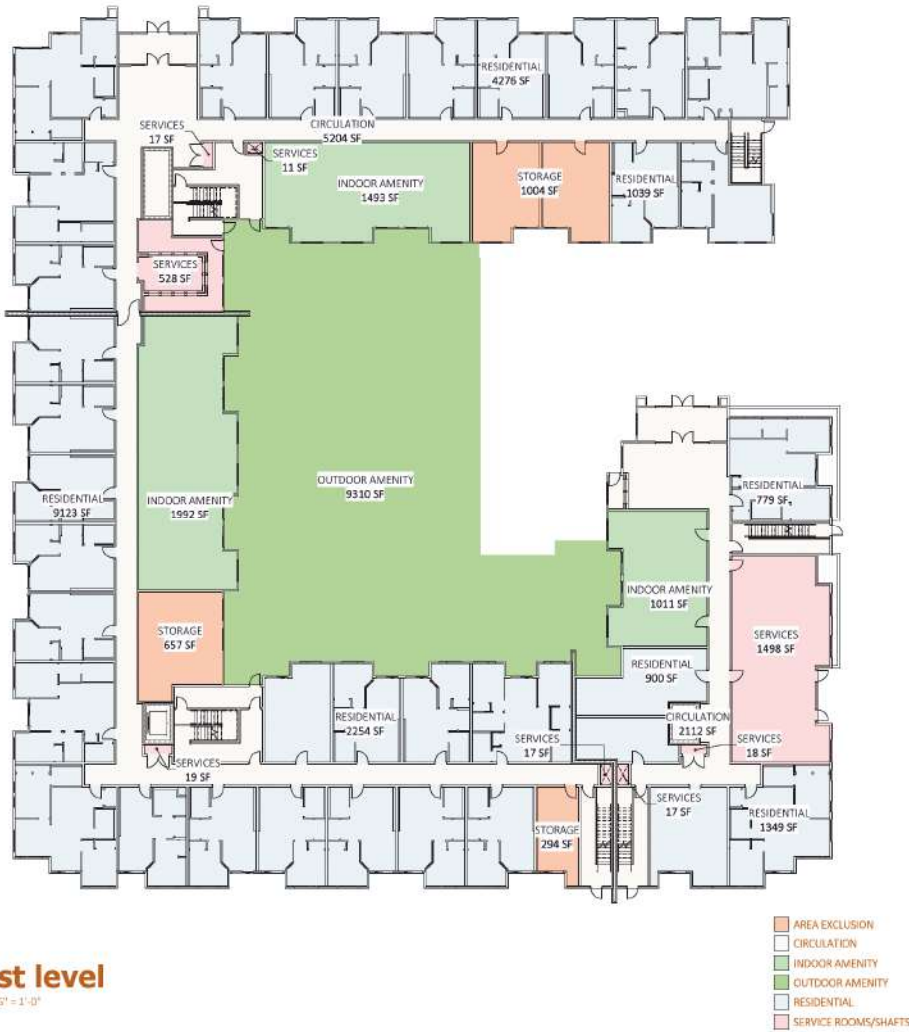
0.6.1 fsr floor area summary

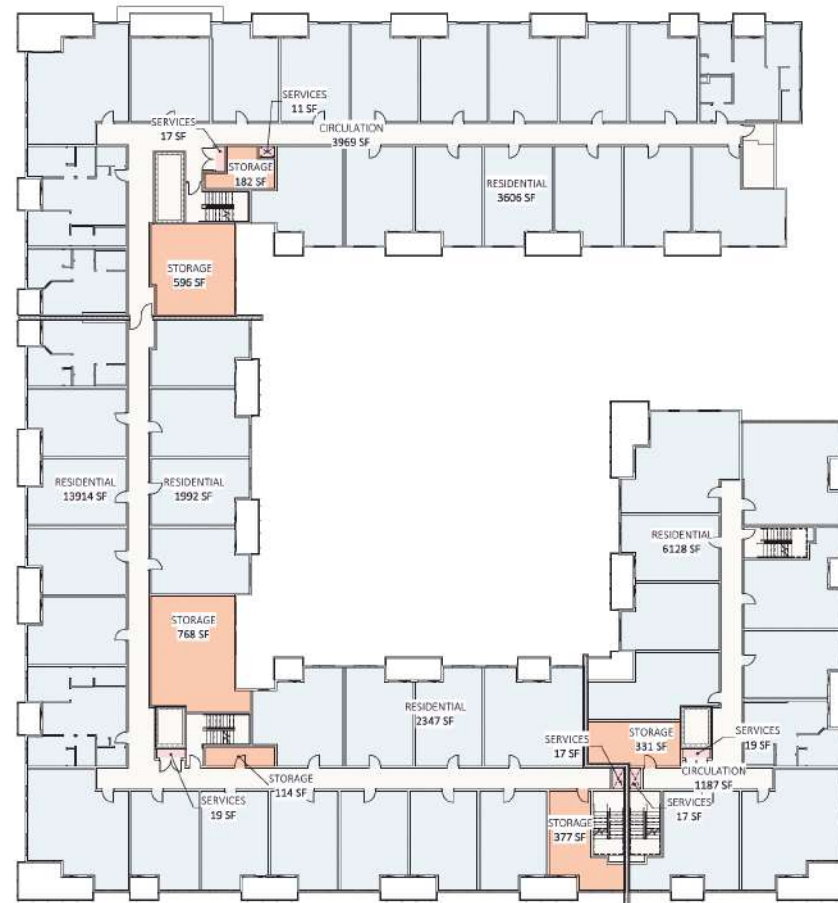
LEVEL / AREA TYPE	AREA SF	AREA m ²	AREA %	COMMENTS
6TH LEVEL	1187 SF	110.25 m ²	0.6%	
	8056 SF	748.39 m²	3.8%	
AREA EXCLUSION				
2ND LEVEL	708 SF	65.76 m ²	0.3%	STORAGE
3RD LEVEL	708 SF	65.76 m ²	0.3%	STORAGE
4TH LEVEL	708 SF	65.76 m ²	0.3%	STORAGE
5TH LEVEL	708 SF	65.76 m ²	0.3%	STORAGE
6TH LEVEL	708 SF	65.76 m ²	0.3%	STORAGE
	3539 SF	328.82 m²	1.7%	
	4695 SF	4363.15 m²	22.0%	
AREA GRAND TOTAL	213651 SF	19848.83 m²	100.0%	

0.6.2 fsr calculation

- SITE AREA: 76,981.87 SF
- BUILDING AREA: 292,869 SF
- EXCLUSIONS: BUILDING A: 20,897 SF + BUILDING B: 3,067 SF
- FSR: 292,869 SF - 3,067 SF - 20,897 SF = 268,905 SF / 76,981.87 SF = 3.493







3rd to 6th level

1/16" = 1'-0"

- AREA EXCLUSION
- CIRCULATION
- RESIDENTIAL
- SERVICE ROOMS/SHAFTS



keystonearch.ca

WHITETAIL 204 STREET APARTMENTS

5360 - 204 STREET, LANGLEY, BC

FSR PLANS

SCALE: N.T.S.

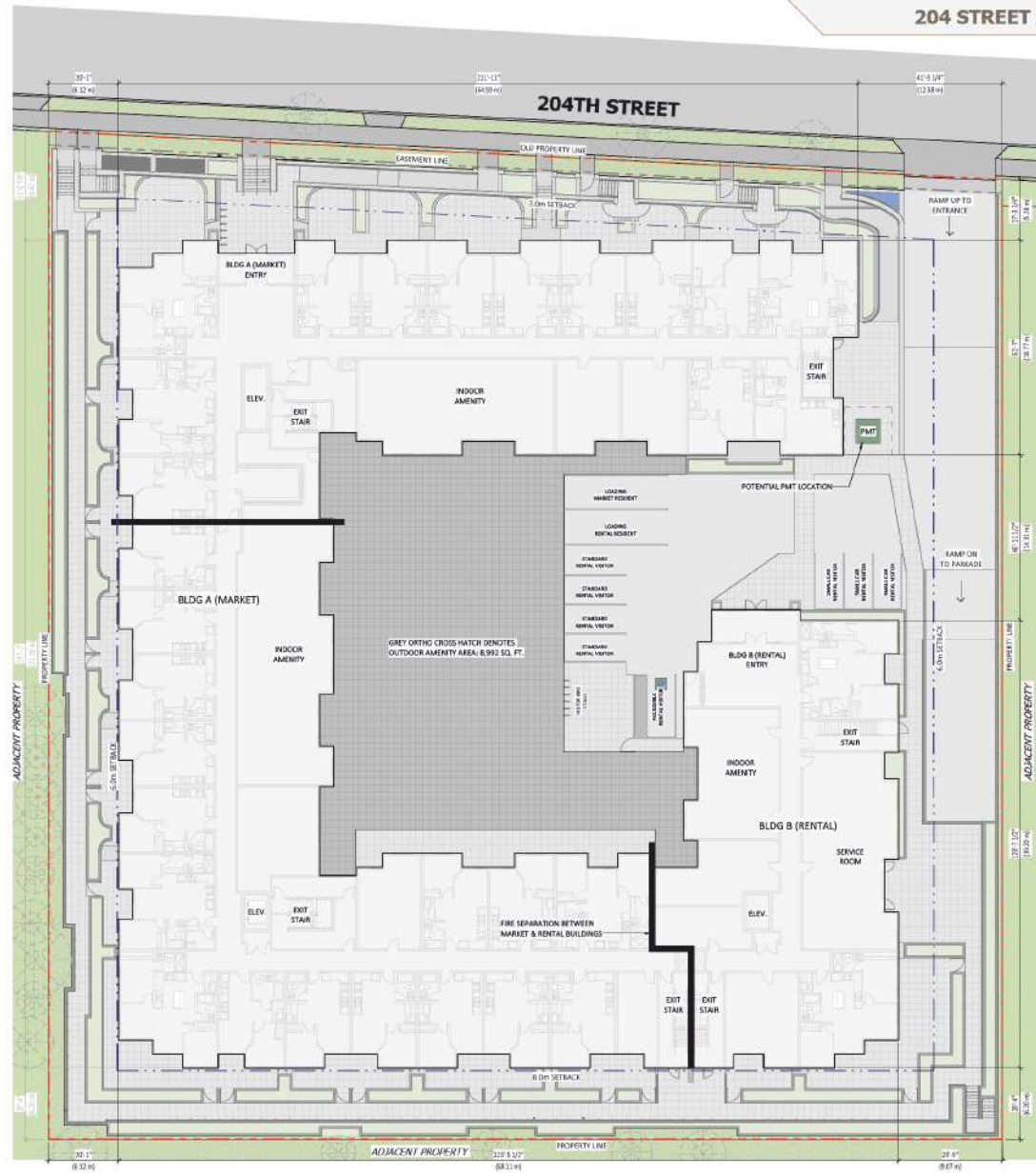


ISSUED FOR DP

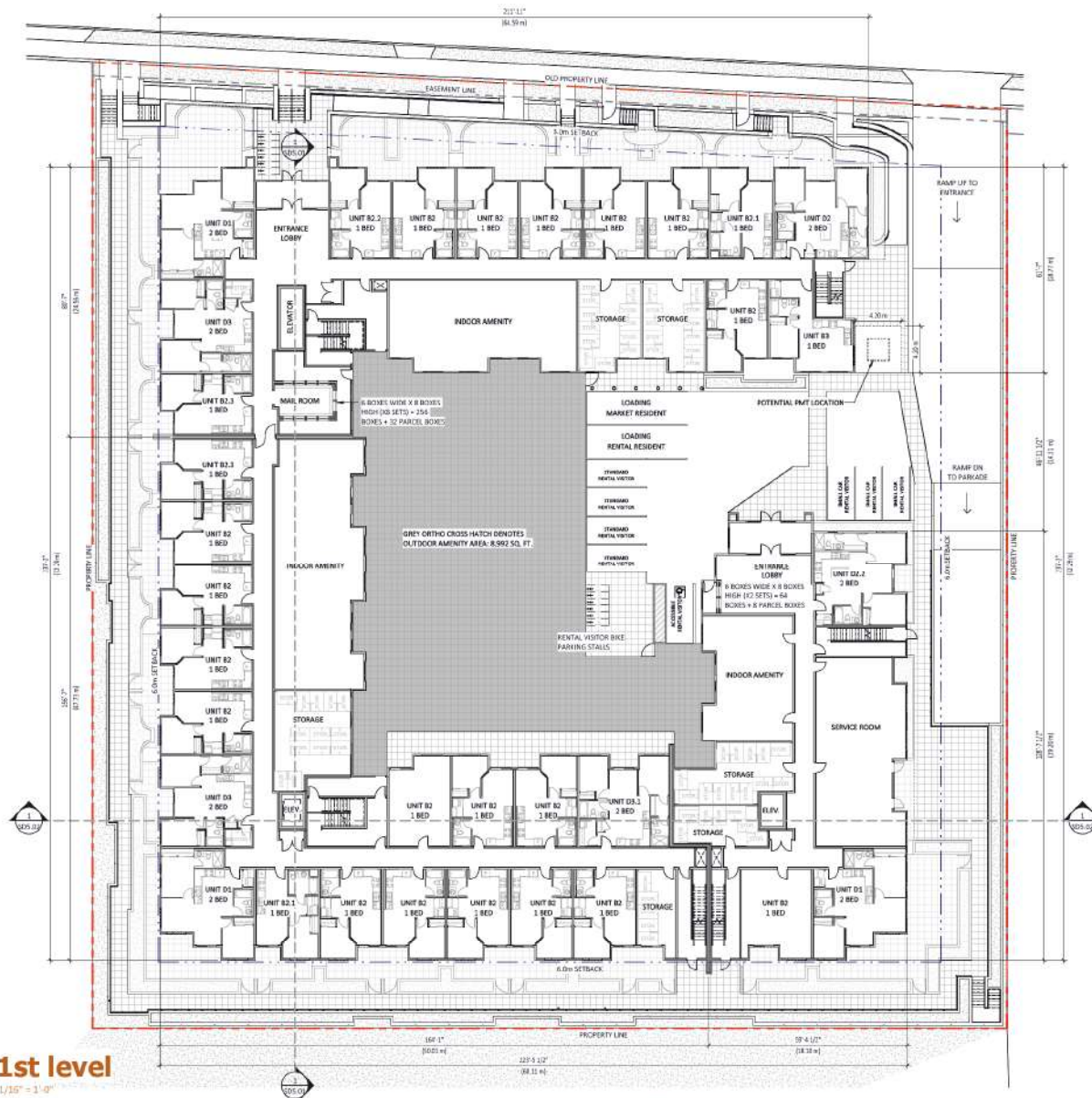
24-05-28 REVISION #
CITY OF LANGLEY FILE #
PROJECT NUMBER: 21172.1



SD1.15



SITE PLAN
1/16" = 1'-0"



WHITETAIL 204 STREET APARTMENTS
5360 - 204 STREET, LANGLEY, BC

1ST LEVEL PLAN
SCALE: 1/16" = 1'-0"

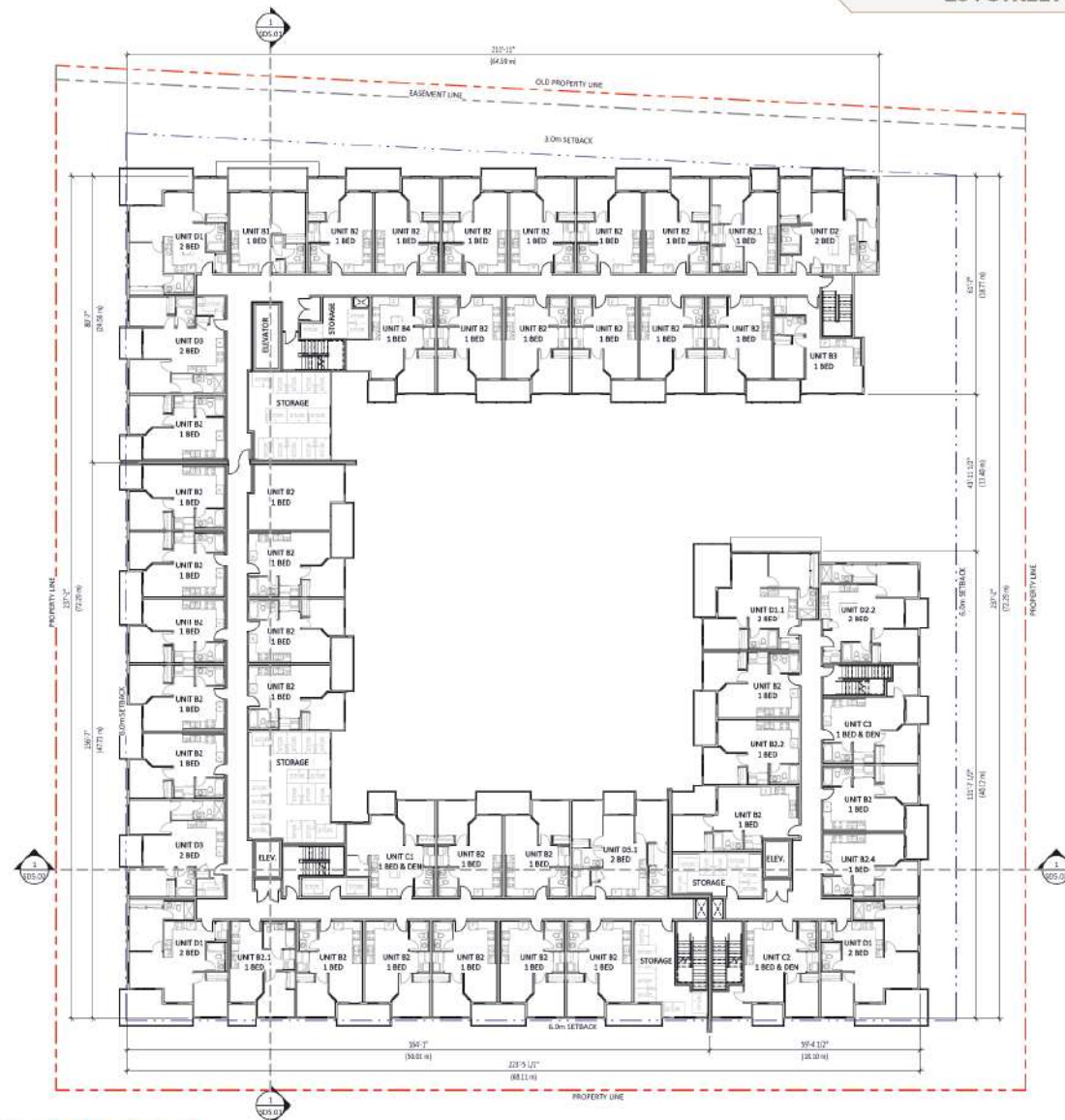


ISSUED FOR DP

24-05-28 REVISION #
CITY OF LANGLEY FILE #
PROJECT NUMBER: 21172.1



SD2.10



2nd-6th level
1/16" = 1'-0"



WHITETAIL 204 STREET APARTMENTS
5360 - 204 STREET, LANGLEY, BC

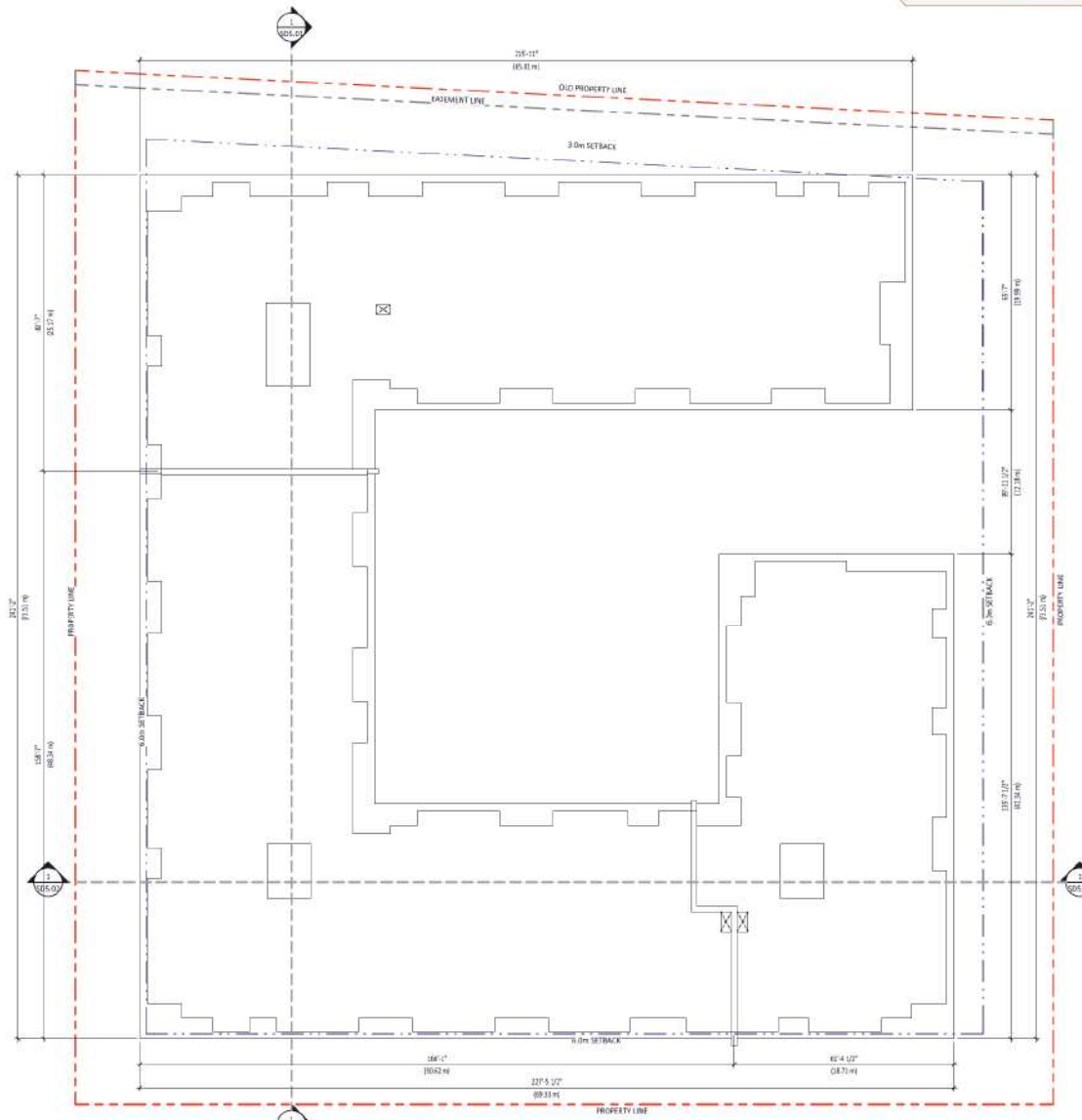
2ND-6TH LEVEL PLAN
SCALE: 1/16" = 1'-0"



ISSUED FOR DP
24-05-28 REVISION #
CITY OF LANGLEY FILE #
PROJECT NUMBER: 21172.1



SD2.11



roof level plan

1/32" = 1'-0"



keystonearch.ca

WHITETAIL 204 STREET APARTMENTS

5360 - 204 STREET, LANGLEY, BC

ROOF LEVEL PLAN

SCALE: N.T.S.

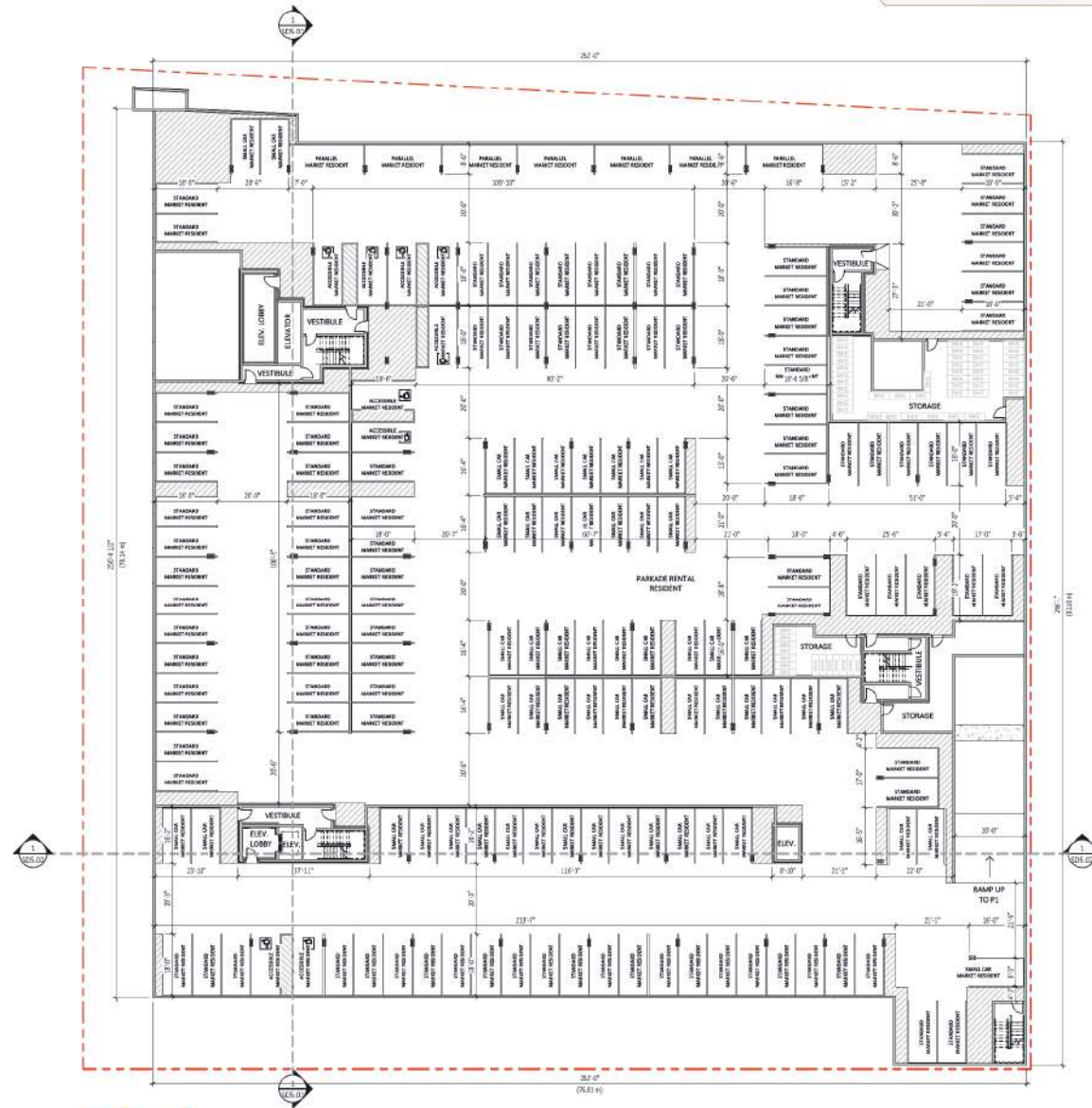


ISSUED FOR DP

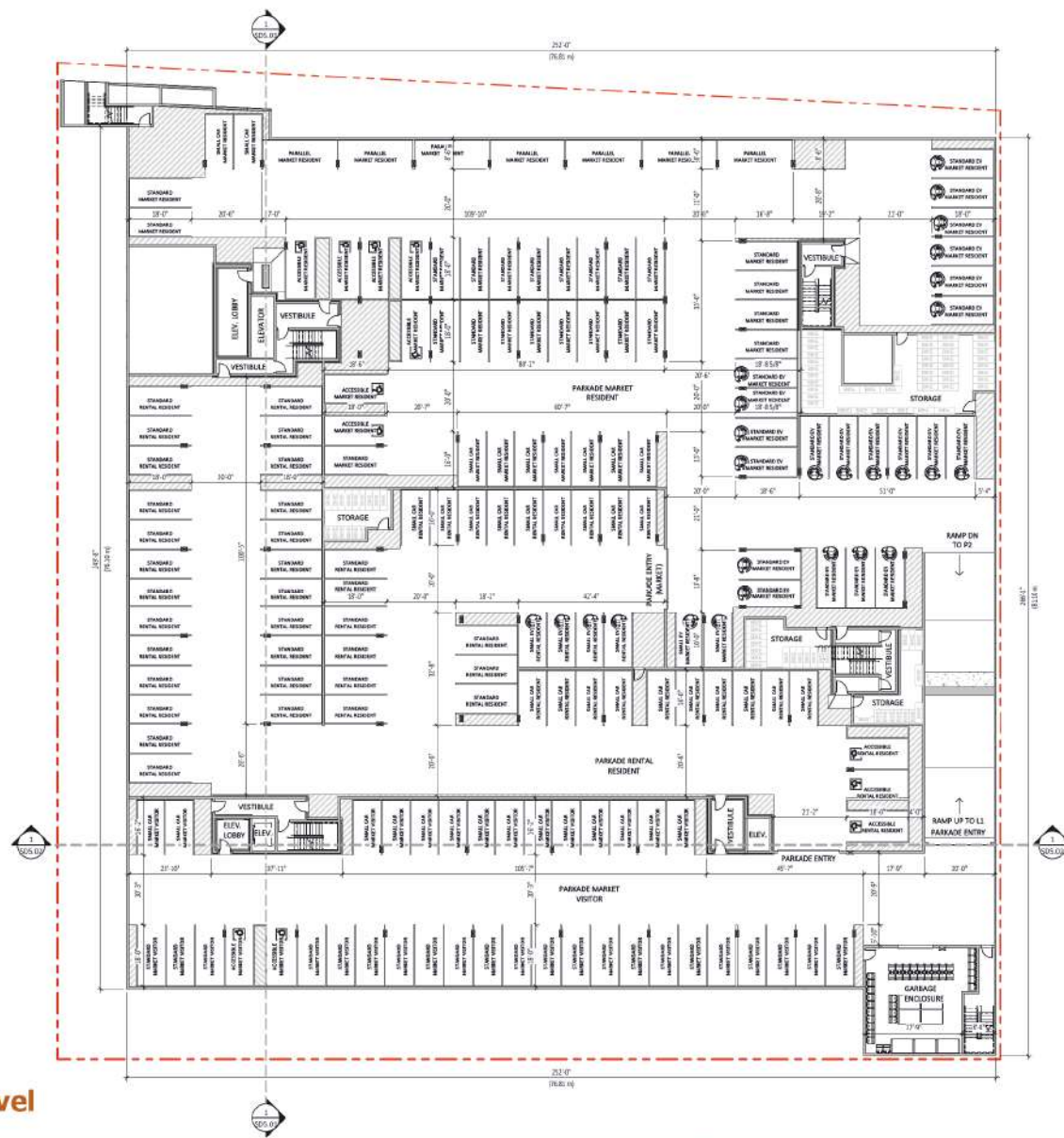
24-05-28 REVISION #
CITY OF LANGLEY FILE #
PROJECT NUMBER: 21172.1



SD2.18



p2 level
1/16" = 1'-0"



p1 level
1/16" = 1'-0"



204 street perspective



south elevation



keystonearch.ca

WHITETAIL 204 STREET APARTMENTS

5360 - 204 STREET, LANGLEY, BC

STREET PERSPECTIVE

SCALE: N.T.S.

ISSUED FOR DP

24-05-28 REVISION #
CITY OF LANGLEY FILE #
PROJECT NUMBER: 21172.1



SD3.01



204th streetscape

3/32" = 1'-0"



keystonearch.ca

WHITETAIL 204 STREET APARTMENTS

5360 - 204 STREET, LANGLEY, BC

STREETSCAPE

SCALE: 3/32" = 1'-0"

ISSUED FOR DP

24-05-28 REVISION #
CITY OF LANGLEY FILE #
PROJECT NUMBER: 21172.1



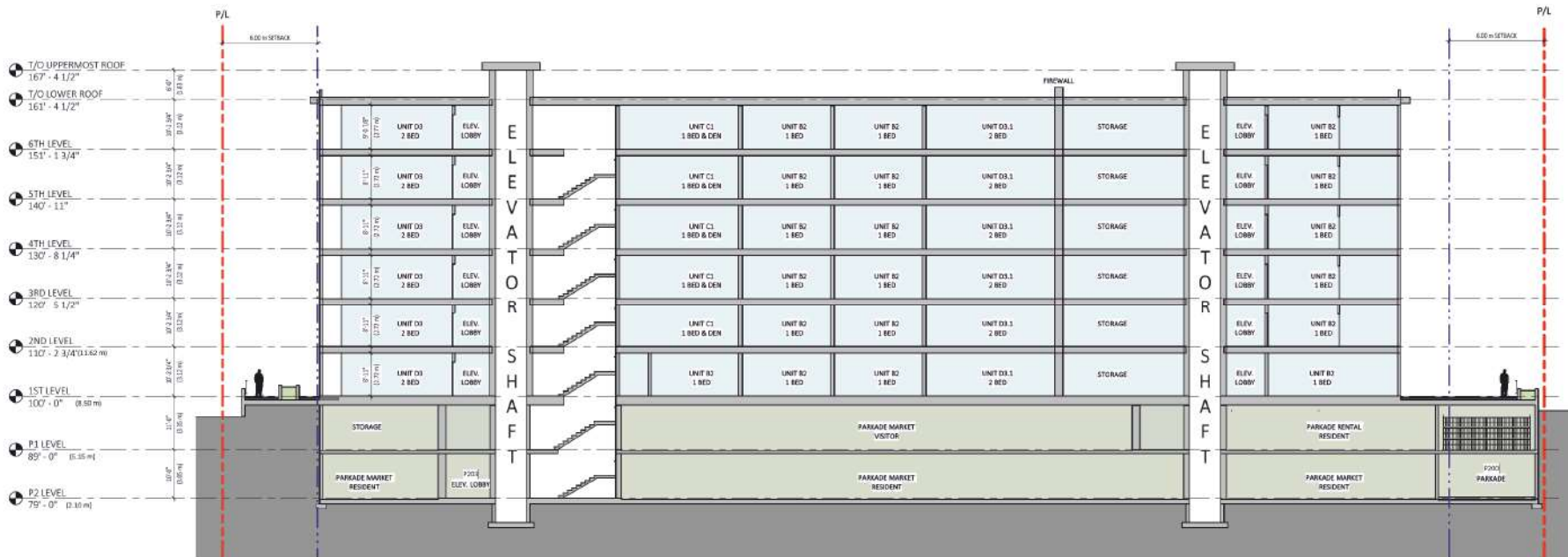
SD4.01



n/s site section
3/32" = 1'-0"

OCCUPANCY USE

- GROUP C - RESIDENTIAL DWELLING UNIT
- GROUP F3 - INDUSTRIAL STORAGE GARAGES



w/e site section
3/32" = 1'-0"

OCCUPANCY USE

- GROUP C - RESIDENTIAL DWELLING UNIT
- GROUP F3 - INDUSTRIAL STORAGE GARAGES